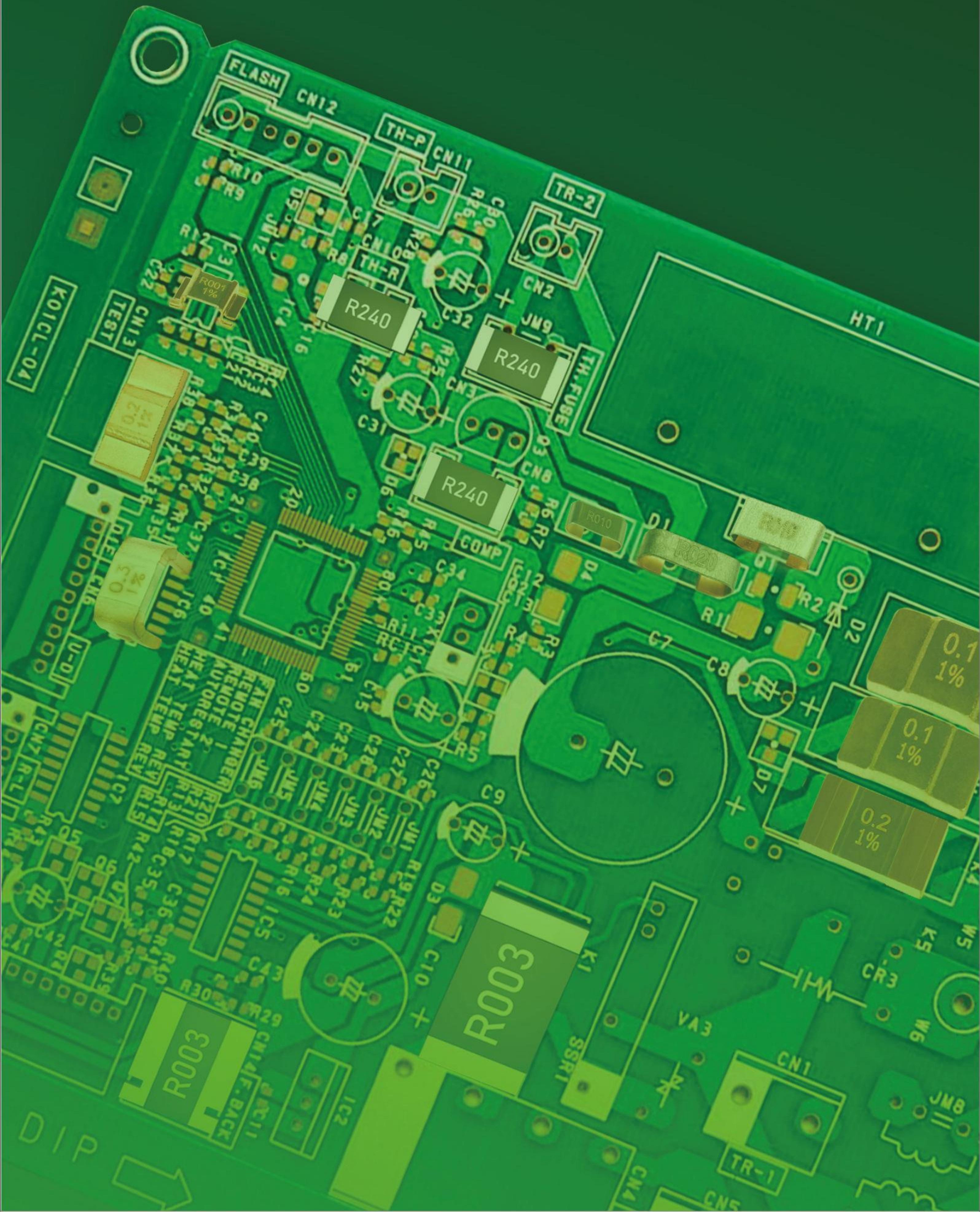
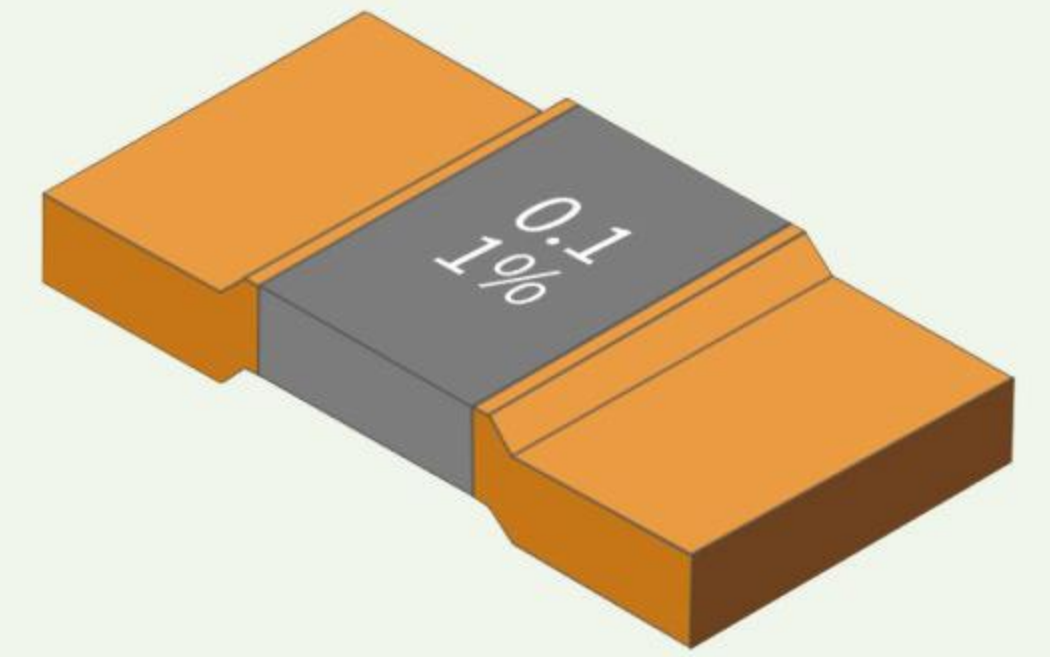


Professional Manufacturer of
Alloy Resistors & Shunts



BARE ALLOY RESISTOR



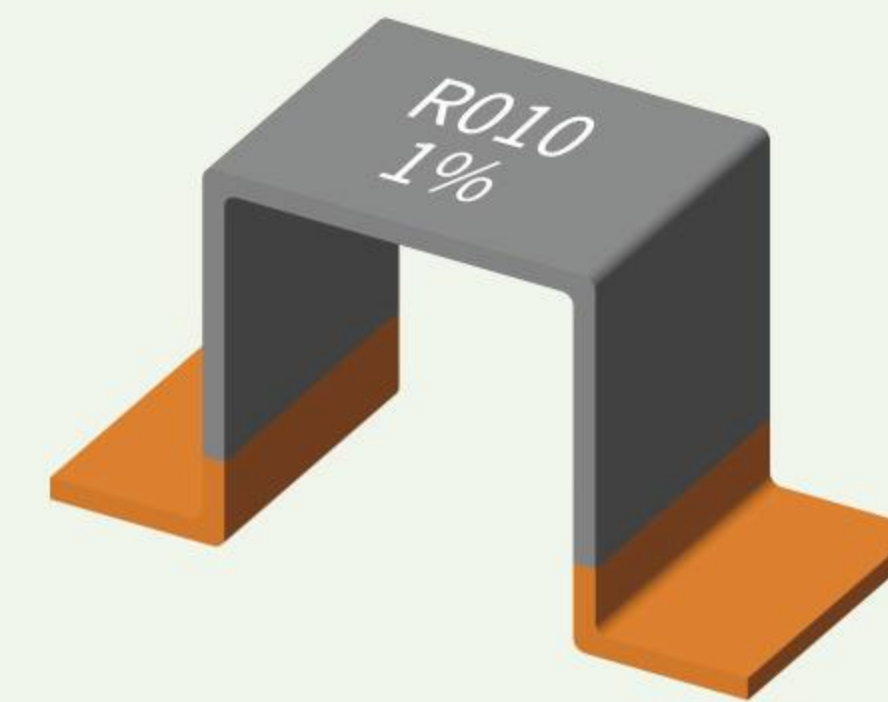
HoLRS

Bare Alloy Resistor Series

Operating Temperature: -55°C ~ +170°C
TCR(ppm/°C): ±10,±20,±25,±50,±75,±100,±150
Material:H=6J06,M=CuMn,N=6J16,K=Karma,T=FeCrAl
Low Inductance <3 nH

In-house Developed and Customizable

Size	Power	Resistance	Tolerance	Material
1206	1W~2W	0.5mR~3mR	±0.1% ±0.2% ±0.5% ±1% ±2% ±5%	H/M
2512	3W~6W	0.1mR~1mR 1.5mR~5mR		H/M
3920	5W~12W	0.1mR~1mR 1.2mR~5mR	±0.1% ±0.2% ±0.5% ±1% ±2% ±5%	H/M
5930	7W~15W	0.1mR~1mR 1.2mR~6mR		K/T
6568	5W~7W	0.1mR,0.2mR		H/M/N



HoLRS (JZ)

Bare Alloy Resistor Series

Operating Temperature: -55°C ~ +170°C
TCR(ppm/°C): ±10,±20,±25,±50,±75,±100,±150
Material:H=6J06,M=CuMn,N=6J16,K=Karma,T=FeCrAl
Low Inductance <3 nH

In-house Developed and Customizable

Size	Power	Resistance	Tolerance	Material
3920	5W~12W	6mR~15mR	±0.1% ±0.2% ±0.5% ±1% ±2% ±5%	K/T
5930	7W~15W	5mR~10mR		K/T

HoRS

Bare Alloy Resistor Series

Operating Temperature: -55°C ~ +170°C
TCR(ppm/°C): ±10,±20,±25,±50,±75,±100,±150
Material:H=6J06,M=CuMn,N=6J16,K=Karma,T=FeCrAl
Low Inductance <3 nH

In-house Developed and Customizable



Size	Power	Resistance	Tolerance	Material
3812	3W	0.5mR ~ 50mR	±0.1% ±0.2% ±0.5% ±1% ±2% ±5%	H/M/K
3824	5W	1mR~25mR		H/M/K

HoBH

Bare Alloy Resistor Series

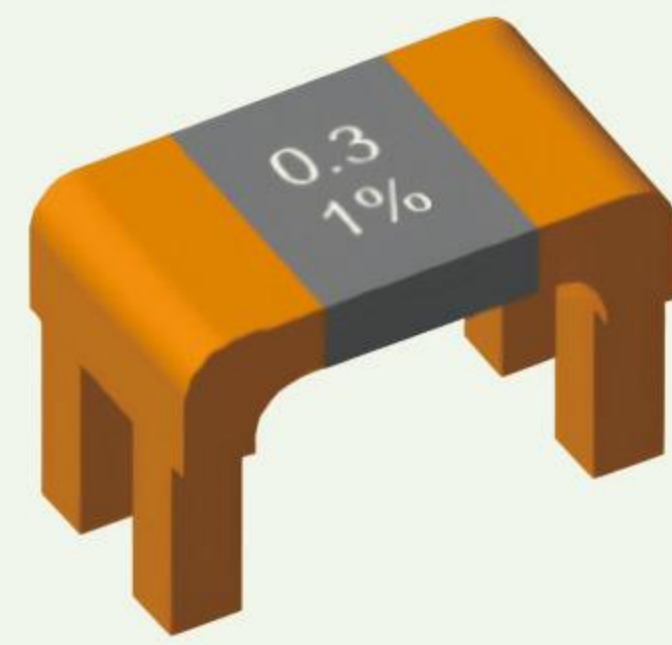
Operating Temperature: -55°C ~ +170°C

TCR(ppm/°C): ±10,±20,±25,±50,±75,±100,±150

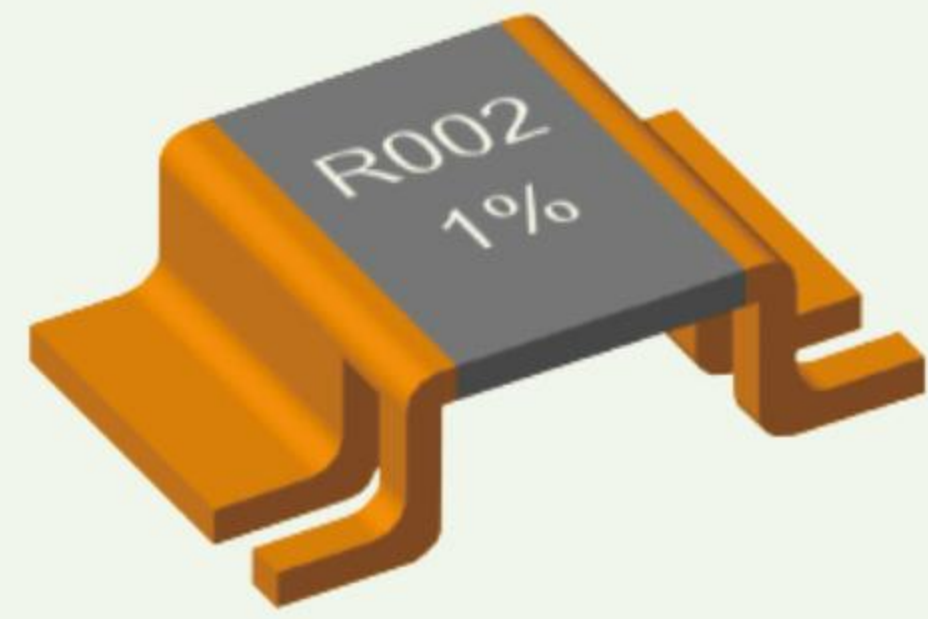
Material:H=6J06,M=CuMn,N=6J16,K=Karma,T=FeCrAl

Low Inductance <3 nH

In-house Developed and Customizable



Size	Power	Resistance	Tolerance	Material
3820	3W 5W	0.2mR~5mR	±0.1%, ±0.2% ±0.5%, ±1%, ±2%, ±5%	H/M/T



HoVB

Bare Alloy Resistor Series

Operating Temperature: -55°C ~ +170°C

TCR(ppm/°C): ±10,±20,±25,±50,±75,±100,±150

Material: H=6J06,M=CuMn,N=6J16,K=Karma,T=FeCrAl

Low Inductance <3 nH

In-house Developed and Customizable

Size	Power	Resistance	Tolerance	Material
4026	3W	0.2mR~0.3mR	±0.1%, ±0.2%	H
	5W	0.5mR~1mR	±0.5%, ±1%, ±2%, ±5%	M
	7W	1mR~5mR		K/T

HoBB

Bare Alloy Resistor Series

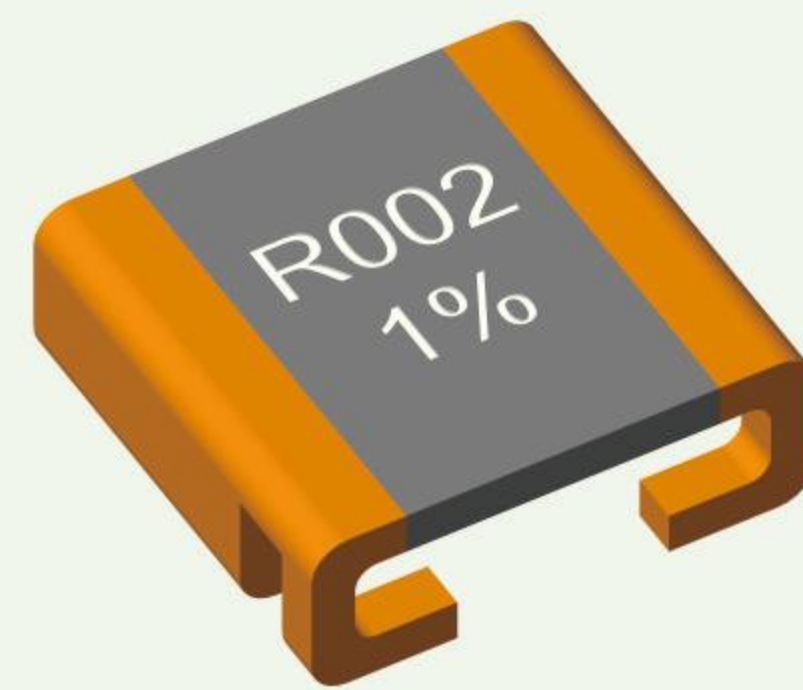
Operating Temperature: -55°C ~ +170°C

TCR(ppm/°C): ±10,±20,±25,±50,±75,±100,±150

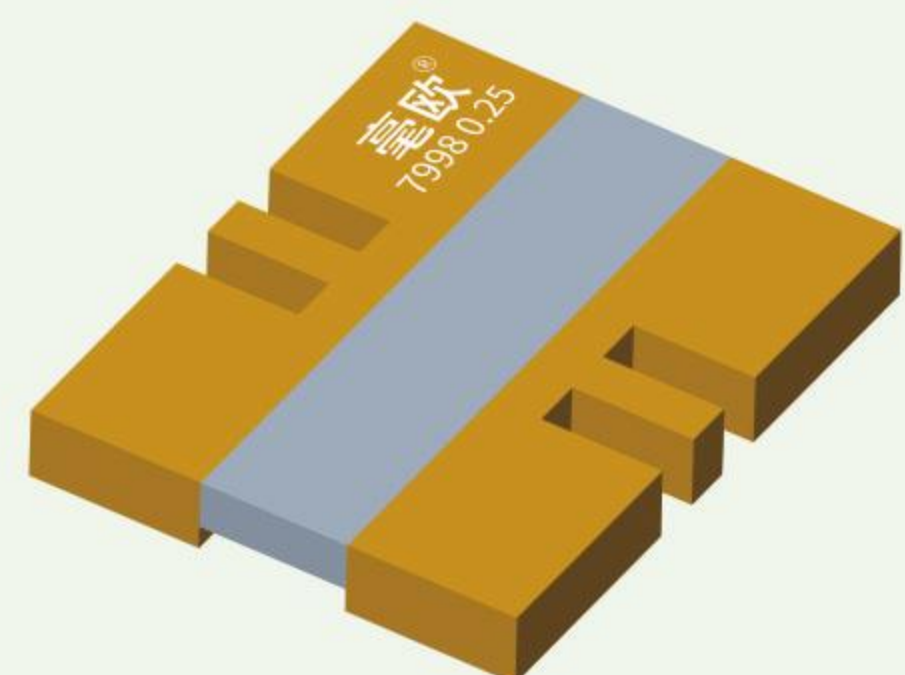
Material:H=6J06,M=CuMn,N=6J16,K=Karma,T=FeCrAl

Low Inductance <3 nH

In-house Developed and Customizable



Size	Power	Resistance	Tolerance	Material
2725	3W、5W、7W	0.2mR~5mR	±0.1% ±0.2%	H/M/N
2726	3W、5W、7W	0.2mR~5mR		H/M/N
1216	5W	0.25mR~1mR	±0.5%	H/M
	3W	1mR~3mR	±1%	M/N
3038	5W	0.25mR~1mR	±2%	H/M
	3W	1mR~3mR	±5%	M/N



LRS

Bare Alloy Resistor Series

Operating Temperature: -55°C ~ +170°C

TCR(ppm/°C): ±5,±10,±20,±25,±50

Material:H=6J06,M=CuMn,N=6J16,K=Karma,T=FeCrAl

Low Inductance <3 nH

In-house Developed and Customizable

Size	Resistance	Rated Current	Tolerance
1010	0.05mR~1mR (1~5mR Customizable)	5A~300A	±0.1% ±0.2% ±0.5% ±1% ±2% ±5%
1310			
1312			
1620			
1625			
2025(7998)			
2530			
3030			

LRS(SR)

Bare Alloy Resistor Series

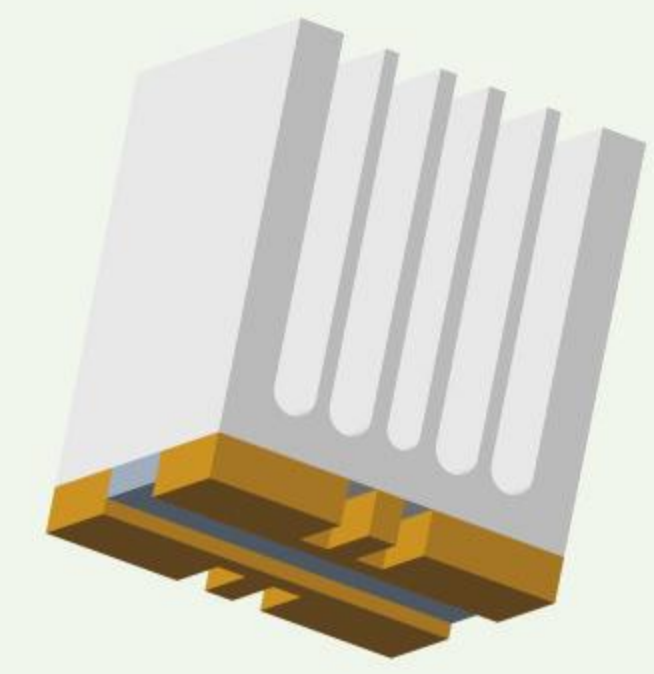
Operating Temperature: -55°C ~ +170°C

TCR(ppm/°C): ±5,±10,±20,±25,±50

Material:H=6J06,M=CuMn,N=6J16,K=Karma,T=FeCrAl

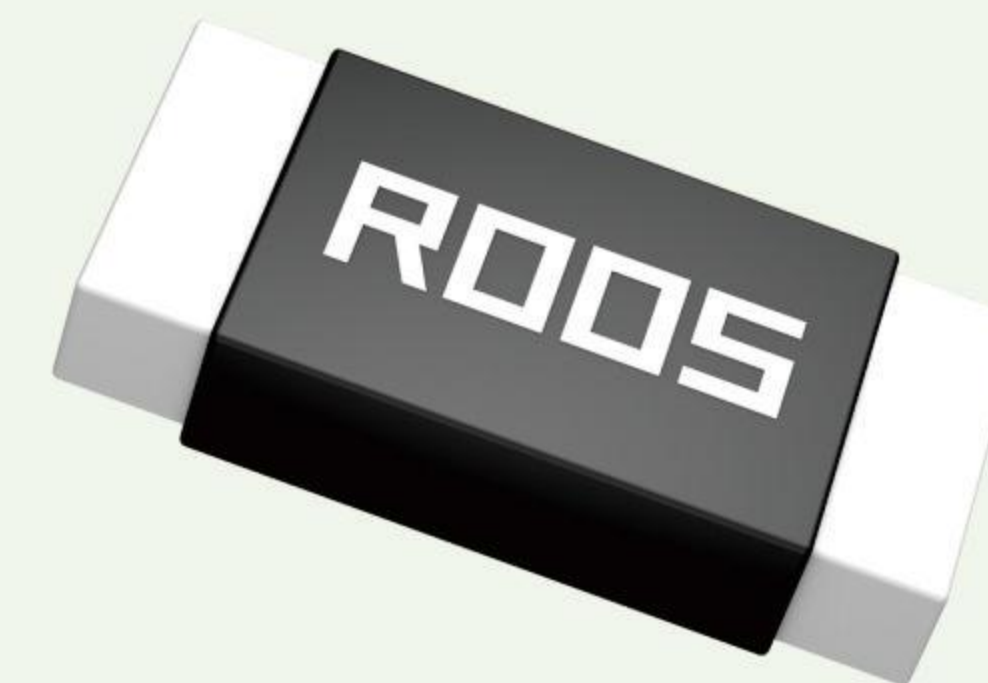
Low Inductance <3 nH

In-house Developed and Customizable



Size	Resistance	Rated Current	Tolerance
1010	0.05mR~1mR (1~5mR Customizable)	5A~400A	±0.1% ±0.2% ±0.5% ±1% ±2% ±5%
1310			
1312			
1620			
1625			
2025(7998)			
2530			
3030			

AUTOMOTIVE GRADE ENCAPSULATED ALLOY RESISTOR



HoJLRC

Automotive Grade Encapsulated Alloy Resistor Series

Operating Temperature: -55°C ~ +170°C

TCR(ppm/°C): ±50,±100

In-house Developed and Customizable

Size	Power	Resistance	Tolerance
0805	1/2W	0mR ~ 20mR	±0.5% ±1% ±5%
1206	3/4W	1mR ~ 100mR	
	1W		
	1/2W	101mR ~ 200mR	
2010	1.5W	1mR ~ 100mR	
2512	3W	50mR ~ 100mR	
	2W	101mR ~ 500mR	

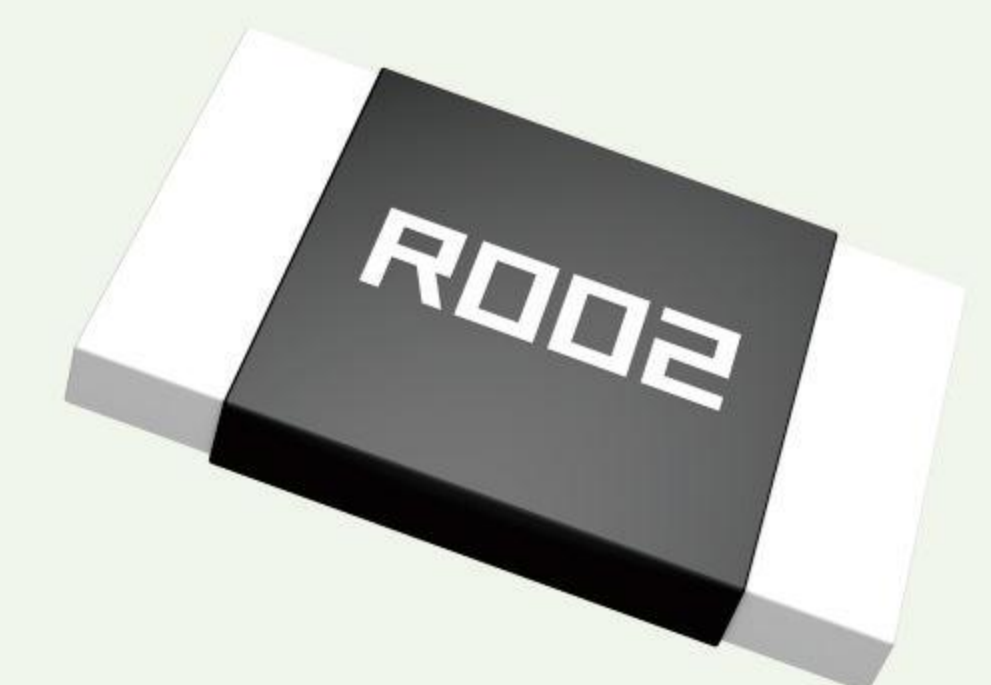
HoCG

Automotive Grade Encapsulated Alloy Resistor Series

Operating Temperature: -55°C ~ +170°C

TCR(ppm/°C): ±10,±25,±50,±100,±150

In-house Developed and Customizable

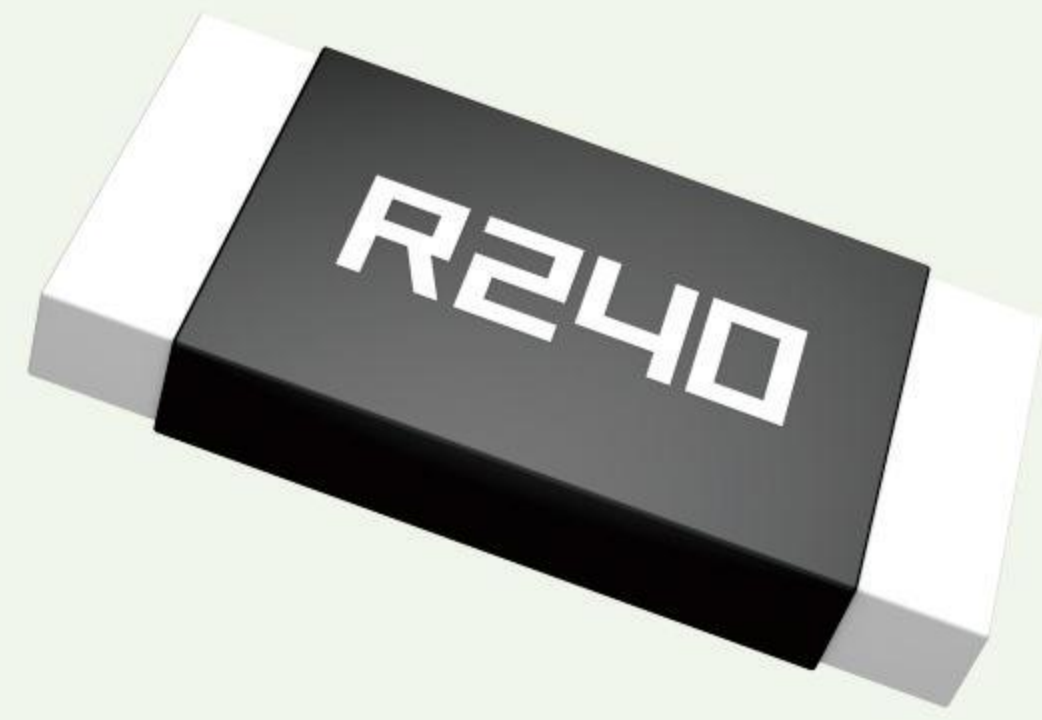


Size	Power	Resistance	Tolerance
2512	2W、3W、 3.5W、4W	0mR~100mR	±0.1% ±0.2% ±0.5% ±1% ±5%
2725	4W	0.2mR ~ 3mR	
2728	4W	4mR ~ 100mR	
2817	5W	0.2mR ~ 100mR	
3637	5W	0.2mR ~ 10mR	
4527	7W	0.5mR ~ 100mR	

INDUSTRIAL GRADE ENCAPSULATED ALLOY RESISTOR

HoJLR

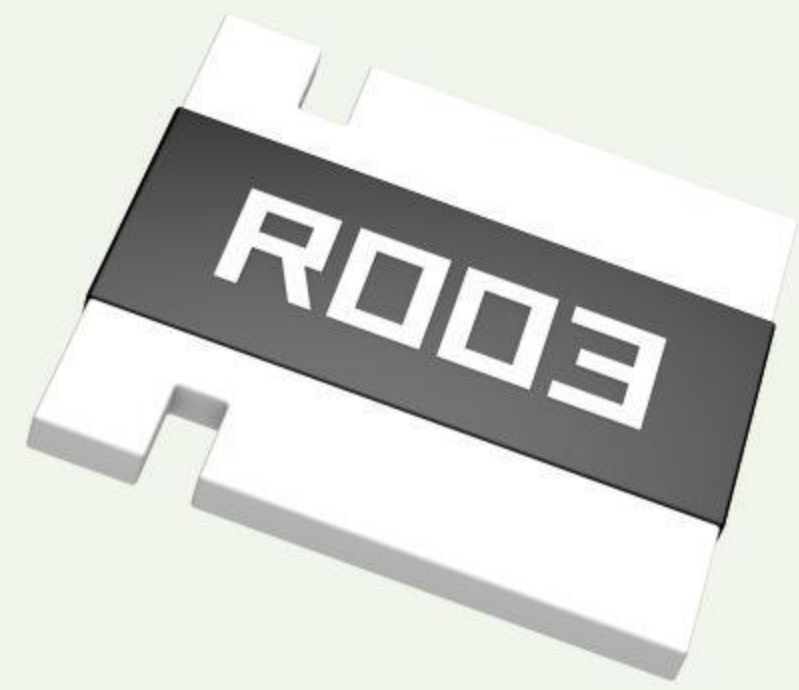
Industrial Grade
Encapsulated Alloy Resistor Series



Operating Temperature: $-55^{\circ}\text{C} \sim +170^{\circ}\text{C}$
TCR(ppm/ $^{\circ}\text{C}$): $\pm 50, \pm 100$

In-house Developed and Customizable

Size	Power	Resistance	Tolerance
0805	1/2W	0mR ~ 20mR	±0.5% ±1% ±5%
1206	3/4W、1W	1mR ~ 100mR	
	1/2W	101mR~200mR	
2010	1.5W	1mR ~ 100mR	
2512	3W	0.5mR ~ 100mR	
	2W	101mR ~ 500mR	



HoCG-D

Industrial Grade
Encapsulated Alloy Resistor Series

Operating Temperature: $-55^{\circ}\text{C} \sim +170^{\circ}\text{C}$
TCR(ppm/ $^{\circ}\text{C}$): $\pm 10, \pm 25, \pm 50, \pm 100, \pm 150$

In-house Developed and Customizable

Size	Power	Resistance	Tolerance
2512D	2W、3W、 3.5W、4W	0mR ~ 100mR	±0.1% ±0.2% ±0.5% ±1% ±5%
2725D	4W	0.2mR ~ 3mR	
2728D	4W	4mR ~ 100mR	
2817D	5W	0.2mR ~ 100mR	
3637D	5W	0.2mR ~ 10mR	
4527D	7W	0.5mR ~ 100mR	

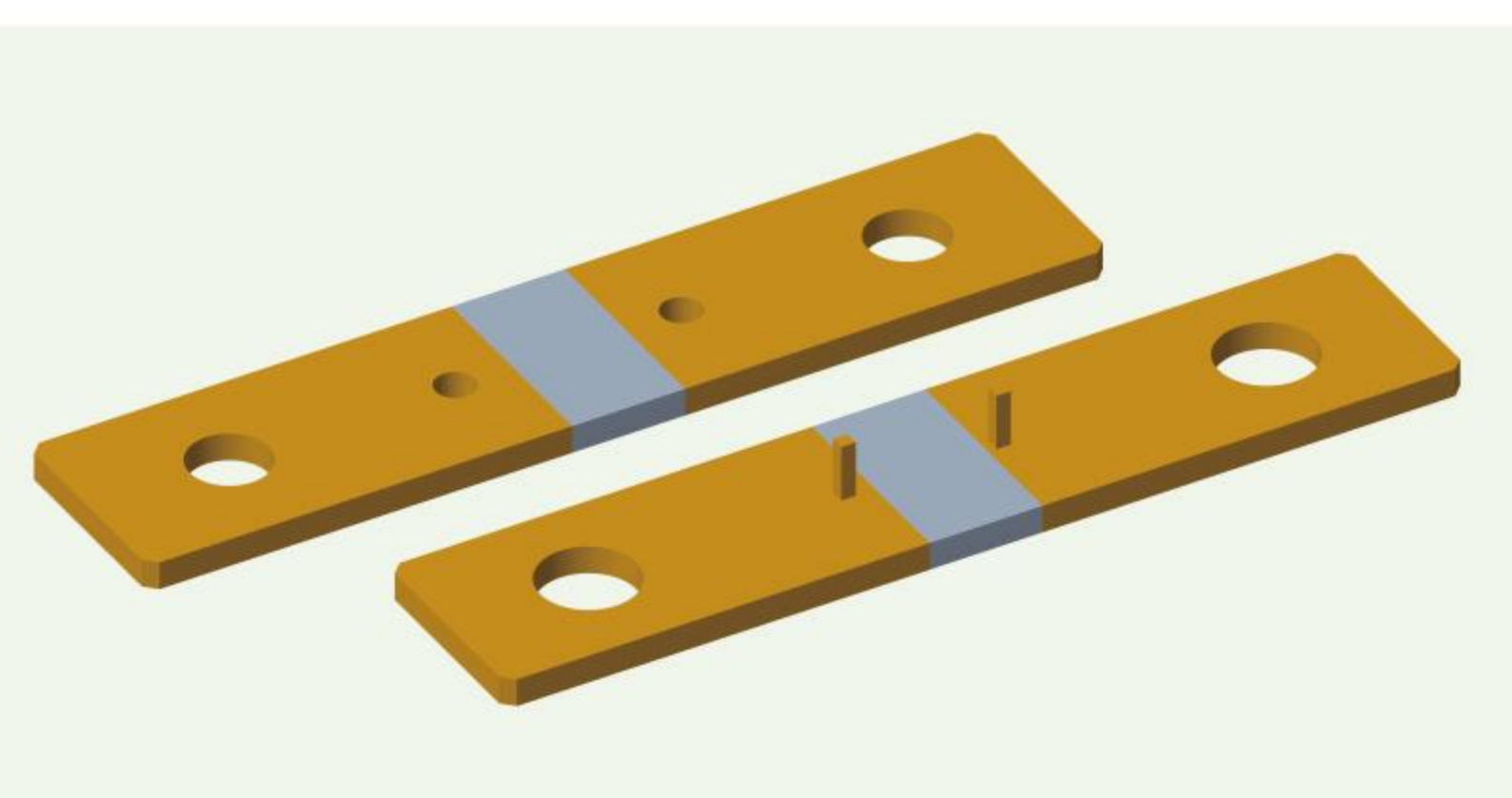
AUTOMOTIVE GRADE SHUNT

Automotive Grade Shunt Optional Sensing Point Hole & Pin

Automotive Grade Shunt Series

Operating Temperature: $-55^{\circ}\text{C} \sim +170^{\circ}\text{C}$
TCR(ppm/ $^{\circ}\text{C}$): $\pm 10, \pm 20, \pm 25, \pm 50, \pm 100, \pm 150$

In-house Developed and Customizable



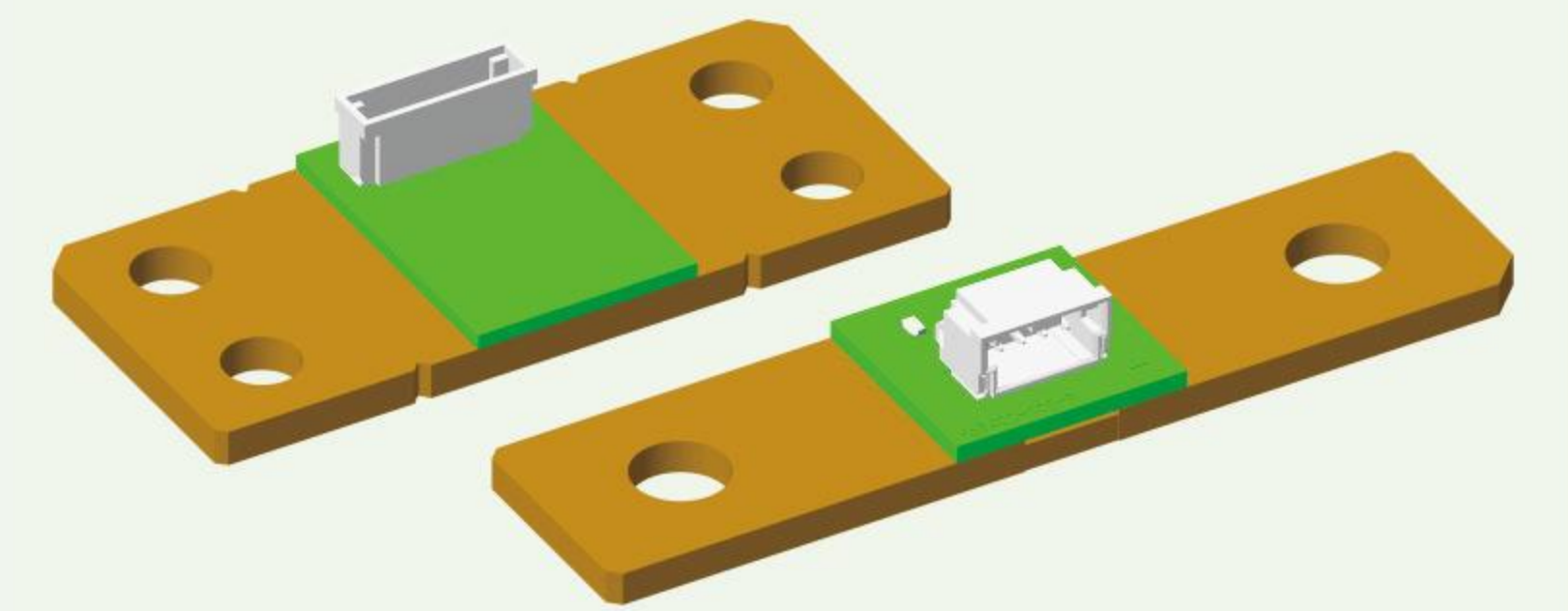
Size	Dimension	Resistance	Tolerance
6918	69*18mm	25μΩ 50μΩ 100μΩ	±0.1% ±0.2% ±0.5% ±1% ±2% ±5%
8420	84*20mm		
8436	84*36mm		
8518	85*18mm		
8536	85*36mm		
9420	94*20mm		

Automotive Grade Shunt Includes PCBA

Automotive Grade Shunt Series

Operating Temperature: $-55^{\circ}\text{C} \sim +170^{\circ}\text{C}$
TCR(ppm/ $^{\circ}\text{C}$): $\pm 10, \pm 20, \pm 25, \pm 50, \pm 100, \pm 150$

In-house Developed and Customizable



Size	Dimension	Resistance	Tolerance
6918	69*18mm	25μΩ 50μΩ 100μΩ	±0.1% ±0.2% ±0.5% ±1% ±2% ±5%
8420	84*20mm		
8436	84*36mm		
8518	85*18mm		
8536	85*36mm		
9420	94*20mm		

INDUSTRIAL GRADE SHUNT 5A-6000A

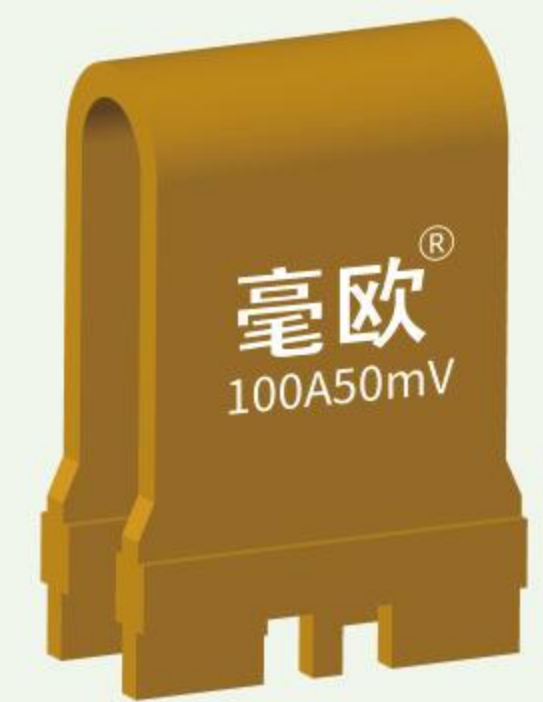
Rated Current	Rated Voltage Drop	Tolerance	TCR
5A-60000A customizable	75mV	±0.01%、±0.05%、 ±0.1%、±0.2%	±10ppm ±25ppm ±50ppm ±100ppm

FLQ60

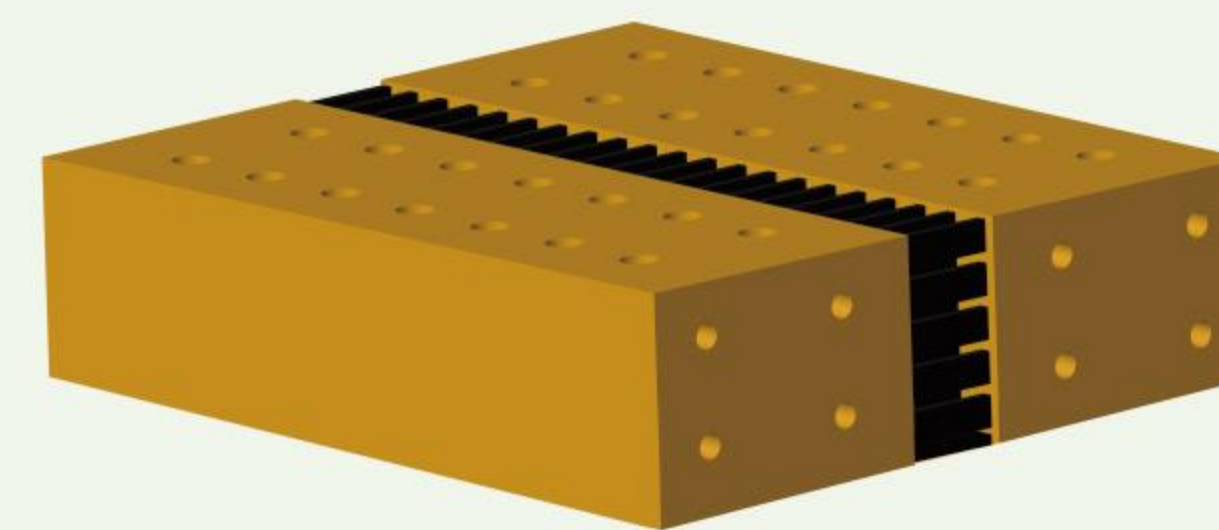
Industrial Grade Shunt Series

Operating Temperature: $-55^{\circ}\text{C} \sim +170^{\circ}\text{C}$
TCR(ppm/ $^{\circ}\text{C}$): $\pm 5, \pm 10, \pm 25, \pm 50, \pm 75, \pm 100$

In-house Developed and Customizable



Rated Current	Rated Voltage Drop	Tolerance	Terminal Space	Resistance
10A~250A	15mV~100mV	±0.05% ±0.1% ±0.2% ±0.5% ±1% ±5%	4.5mm~30mm	50μΩ~1mΩ



FL2

Industrial Grade Shunt Series

Operating Temperature: $-55^{\circ}\text{C} \sim +170^{\circ}\text{C}$
TCR(ppm/ $^{\circ}\text{C}$): $\pm 25, \pm 50, \pm 75, \pm 100$

In-house Developed and Customizable

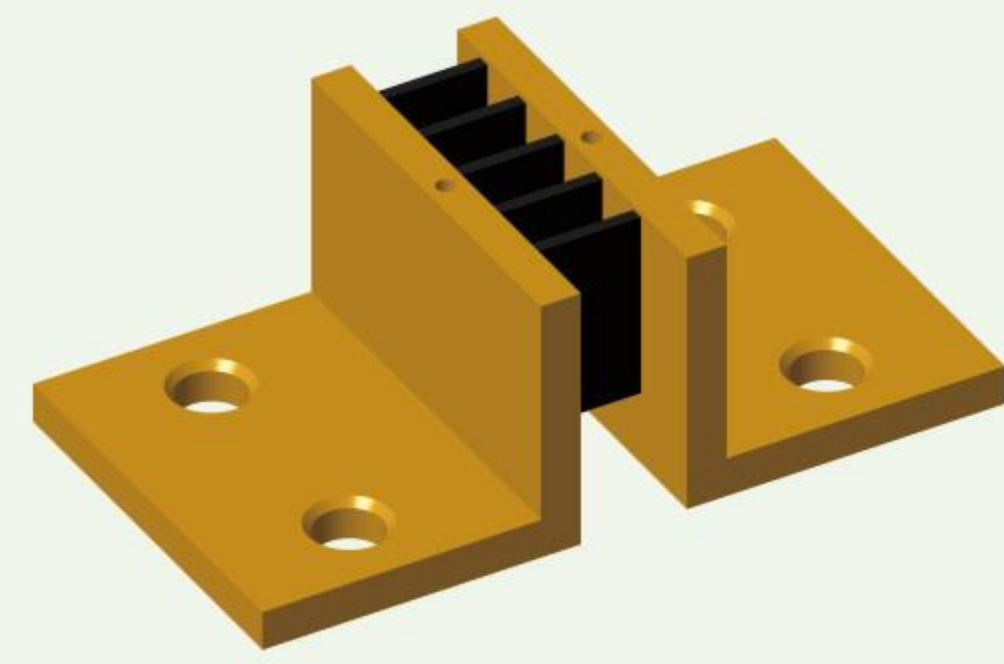
Rated Current	Rated Voltage Drop	Tolerance	Resistance
6000A ~ 60000A	50mV 60mV 75mV 100mV	±0.1% ±0.2% ±0.5% ±1% ±5%	0.00125mR 0.001mR 0.0125mR 0.01mR 0.1mR

FL2

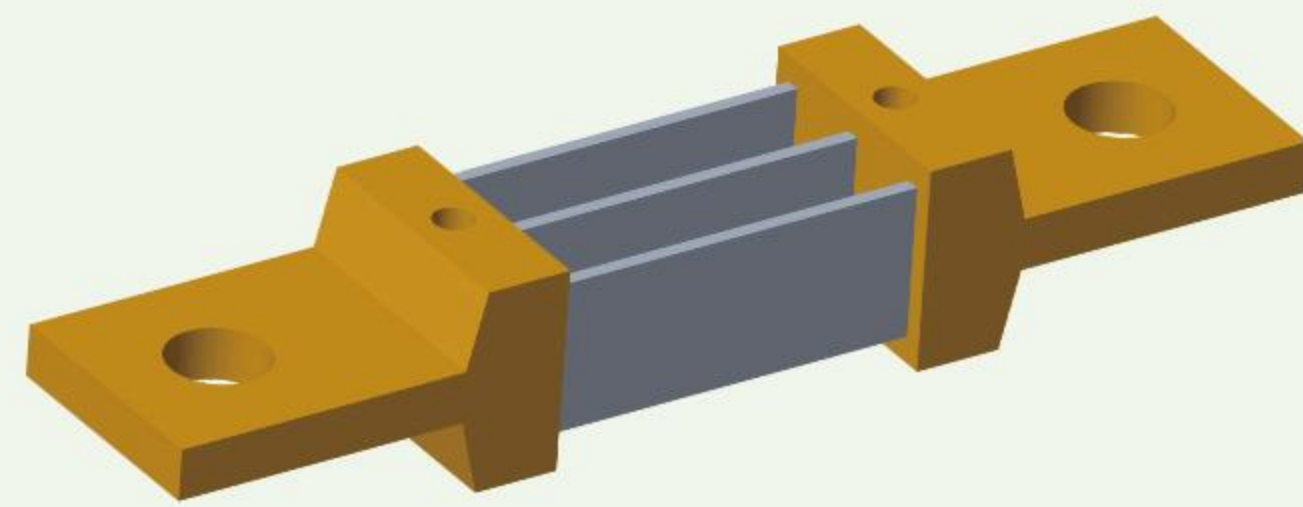
Industrial Grade Shunt Series

Operating Temperature: -55°C ~ +170°C
TCR(ppm/°C): ±25,±50,±75,±100

In-house Developed and Customizable



Rated Current	Rated Voltage Drop	Tolerance	Resistance
1000A	75mV	±0.01%	0.075mR
2000A		±0.1%	0.0375mR
3000A		±0.2%	0.025mR
4000A		±0.5%	0.01875mR
5000A		±1%, ±5%	0.015mR



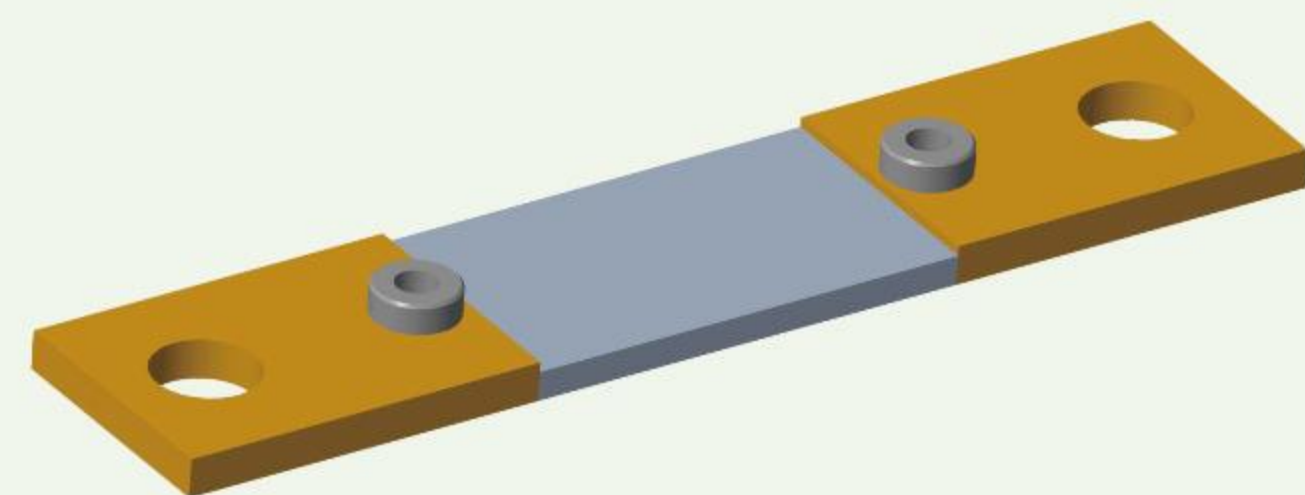
Rated Current	Rated Voltage Drop	Tolerance	Resistance
20A	75mV	±0.01% ±0.1% ±0.2% ±0.5% ±1% ±5%	3.75mR
30A			2.5mR
50A			1.5mR
100A			0.75mR
200A			0.375mR
250A			0.3mR
300A			0.25mR
400A			0.1875mR
500A			0.15mR
600A			0.125mR
700A			0.1071mR
800A			0.09375mR
900A			0.0833mR
1000A			0.075mR
2000A			0.0375mR
4000A			0.01875mR
6000A	0.0125mR		

FL2

Industrial Grade Shunt Series

Operating Temperature: -55°C ~ +170°C
TCR(ppm/°C): ±25,±50,±75,±100

In-house Developed and Customizable



FL3T

Industrial Grade Shunt Series

Operating Temperature: -55°C ~ +170°C
TCR(ppm/°C): ±10,±25,±50,±100

In-house Developed and Customizable

Rated Current	Rated Voltage Drop	Tolerance	Resistance
50A	75mV	±0.05% ±0.1% ±0.2% ±0.5% ±1% ±5%	1.5mR
75A			1mR
100A			0.75mR
150A			0.5mR
200A			0.375mR
250A			0.3mR
300A			0.25mR
400A			0.1875mR
500A			0.15mR
600A			0.125mR
700A			0.1071mR
800A			0.09375mR
1000A	0.075mR		

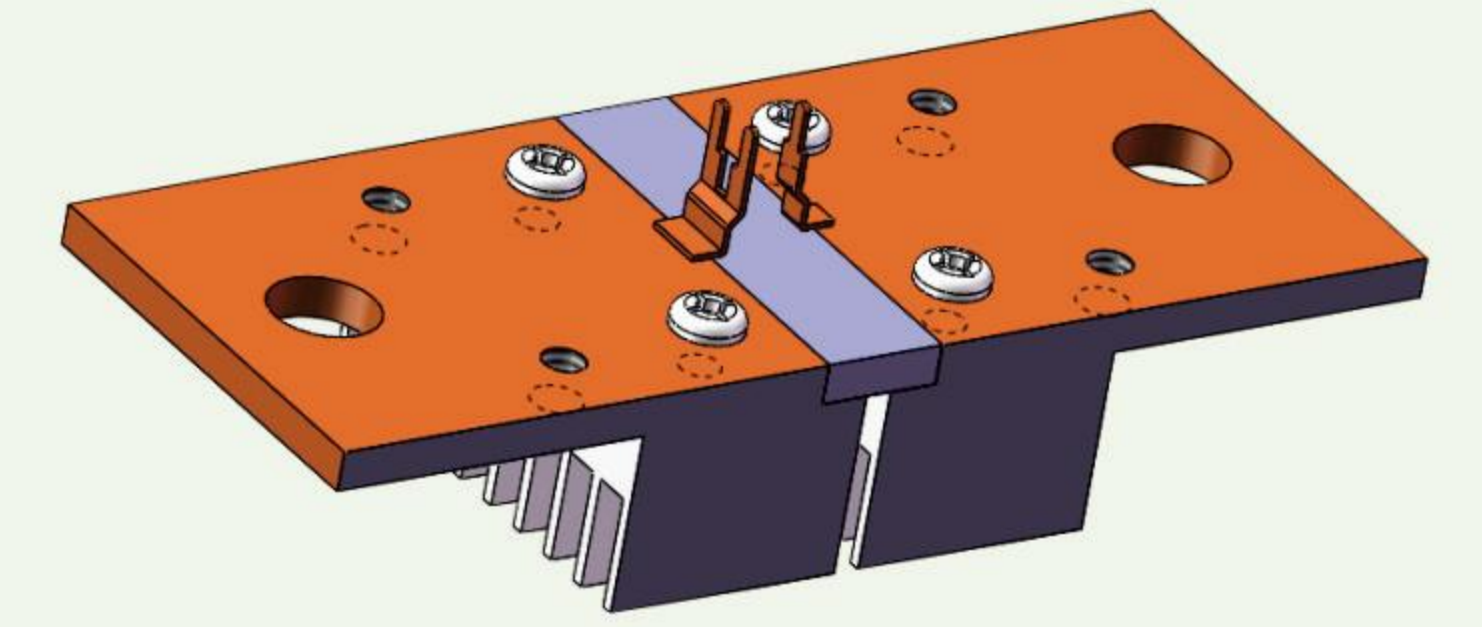
MB SERIES METER SHUNT

DC Meter Shunt Series

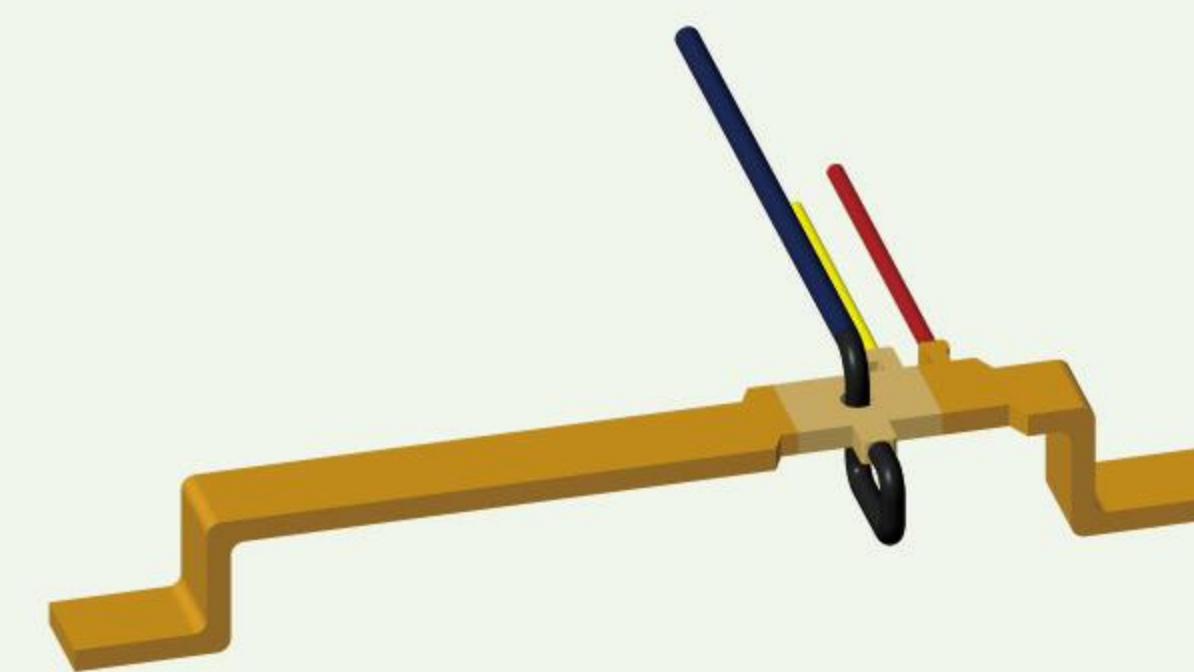
MB Series Meter Shunt Series

Operating Temperature: -55°C ~ +170°C
TCR(ppm/°C): ±10,±20,±50,±100

In-house Developed and Customizable



Rated Current	Rated Voltage Drop	Resistance	Tolerance
100A~1000A	10mV~100mV	5μΩ~1mΩ	±0.1%, ±0.2% ±0.5%, ±1% ±5%



AC Meter Shunt Series

MB Series Meter Shunt Series

Operating Temperature: -55°C ~ +170°C
TCR(ppm/°C): ±10,±20,±50

In-house Developed and Customizable

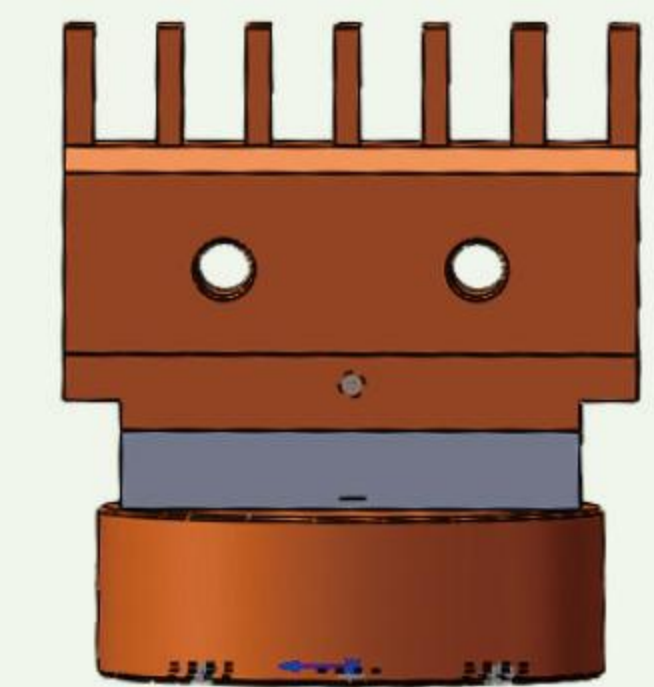
Rated Current	Rated Voltage Drop	Resistance	Tolerance
10A~150A	10mV~100mV	5μΩ~1mΩ	±0.1%, ±0.2% ±0.5%, ±1% ±5%

Frame Circuit Breaker Shunt

MB Series Meter Shunt Series

Operating Temperature: -55°C ~ +170°C
TCR(ppm/°C): ±10,±20,±50,±100,±200

In-house Developed and Customizable



Rated Current	Rated Voltage Drop	Resistance	Tolerance
100A~5000A	10mV~100mV	1μΩ~0.5mΩ	±0.1%, ±0.2% ±0.5%, ±1% ±5%



Smart Circuit Breaker Shunt

MB Series Meter Shunt Series

Operating Temperature: -55°C ~ +170°C
TCR(ppm/°C): ±10,±20,±50,±100,±200

In-house Developed and Customizable

Rated Current	Rated Voltage Drop	Resistance	Tolerance
5A~250A	10mV~100mV	50μΩ~1mΩ	±0.1%, ±0.2% ±0.5%, ±1% ±5%

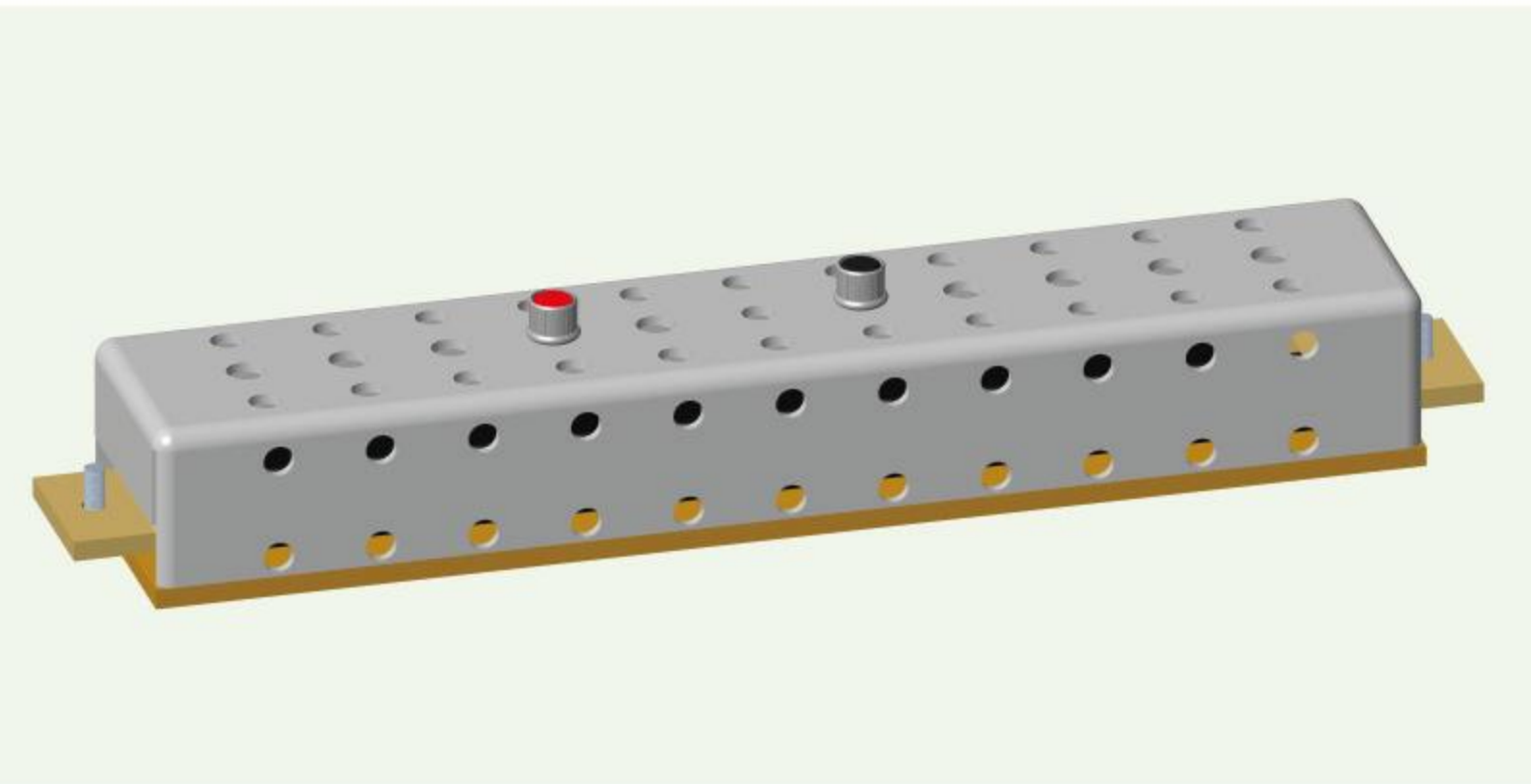
STANDARD RESISTOR

BZ

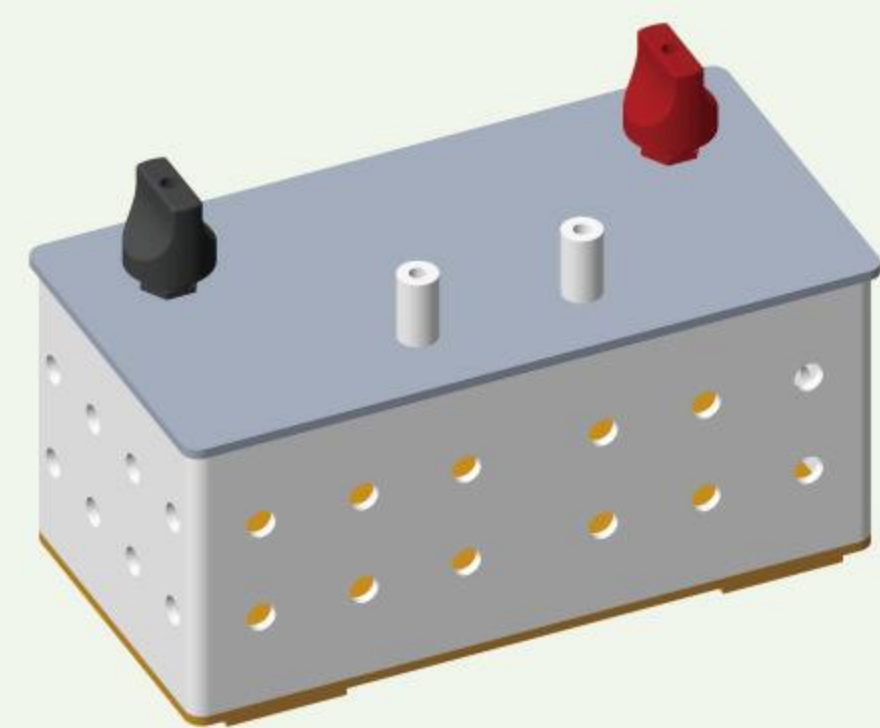
Standard Resistor Series

Operating Temperature: -20~+45°C

In-house Developed and Customizable



Tolerance	Rated Current	Rated Voltage Drop	TCR
0.01%	75A	75mV 100mV 300mV	10PPM 25PPM
0.02%	100A		
0.05%	200A		
	300A		
	500A		
	600A		
	1000A		



BZ

Standard Resistor Series

Operating Temperature: -20~+45°C

In-house Developed and Customizable

Tolerance	Rated Current	Rated Voltage Drop	TCR
0.01%	100A	75mV	10PPM 25PPM
0.02%	200A		
0.05%	300A		
	400A		
	500A		
	600A		

BZ

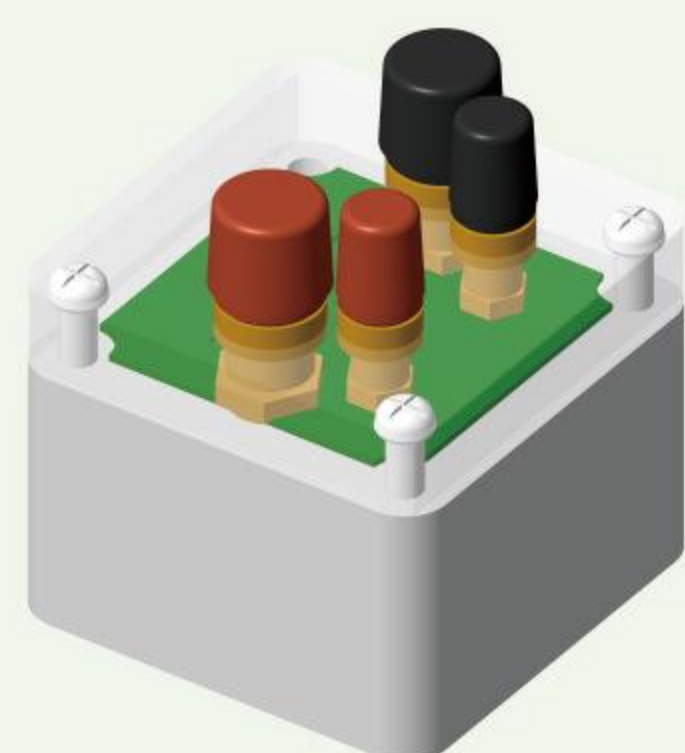
Standard Resistor Series

Operating Temperature: 25±3°C

In-house Developed and Customizable



Tolerance	Resistance	Intended Use
0.01%	0.1mR	Calibration
0.02%	10mR	
0.05%	100mR	
	1Ω	



BZ

Standard Resistor Series

Operating Temperature: -20~+45°C

Automatic Temperature Compensation
In-house Developed and Customizable

Tolerance	Resistance	Intended Use
0.001%	0.01mR	Calibration
0.005%	0.1mR	
0.01%	1mR	

THROUGH HOLE RESISTOR

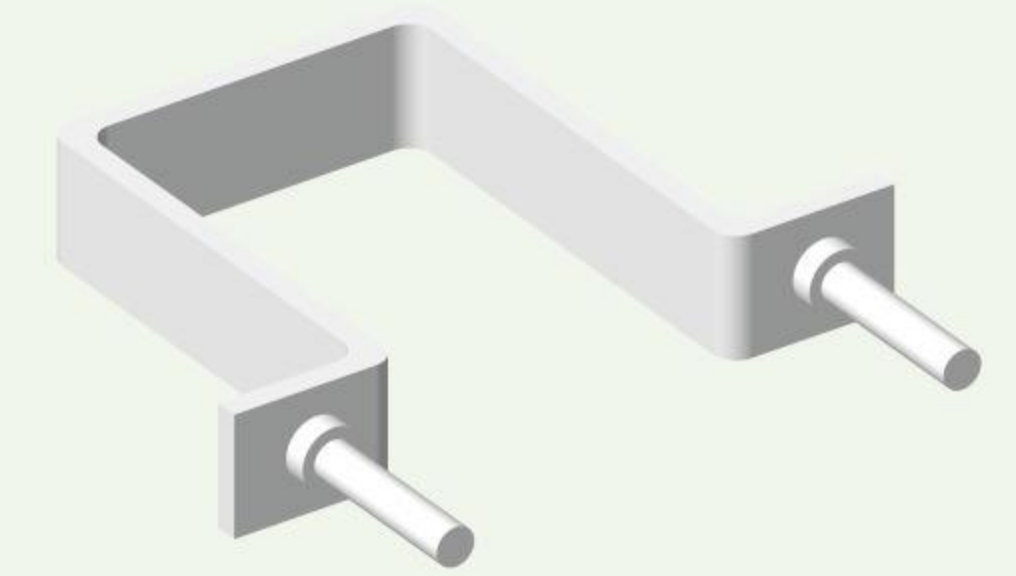
HoLR(JZ)

Through Hole Resistor Series

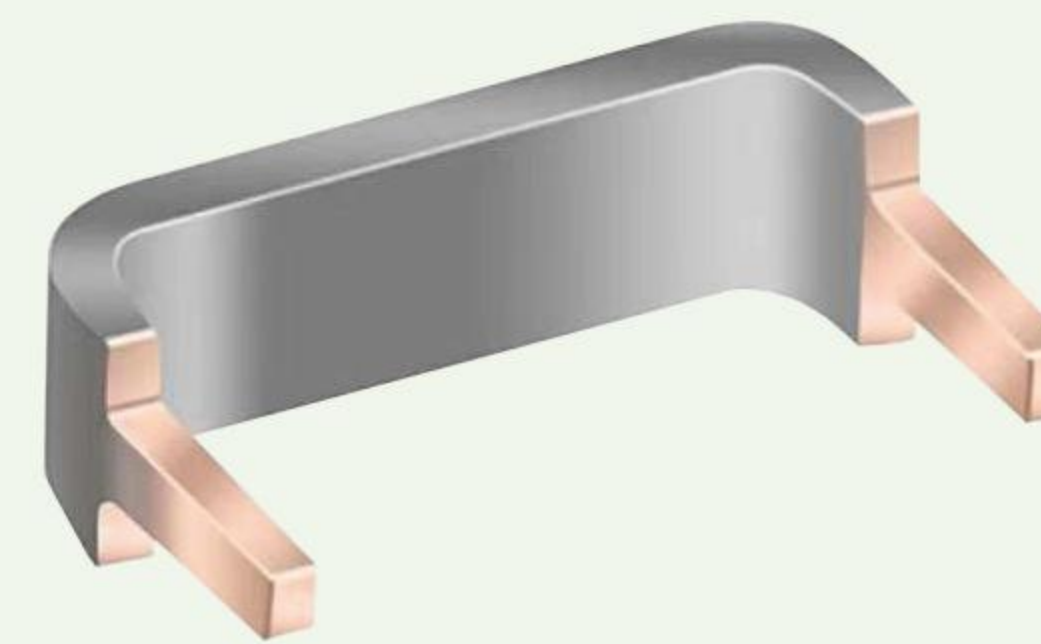
Operating Temperature: -55°C ~ +170°C

TCR(ppm/°C): ±20,±40,±75,±100,±150

In-house Developed and Customizable



Power	Pin Space	Resistance	Tolerance
2W~5W	5mm~50mm	0.5mR~100mR	±0.5% ±1% ±5%



HoSRB Welded Resistor

Through Hole Resistor Series

Operating Temperature: -55°C ~ +170°C

TCR(ppm/°C): ±20,±50,±100

In-house Developed and Customizable

Power	Pin Space	Resistance	Tolerance
1W~7W	5mm~30mm	0.5mR~20mR	±0.2% ±0.5% ±1% ±2% ±5%

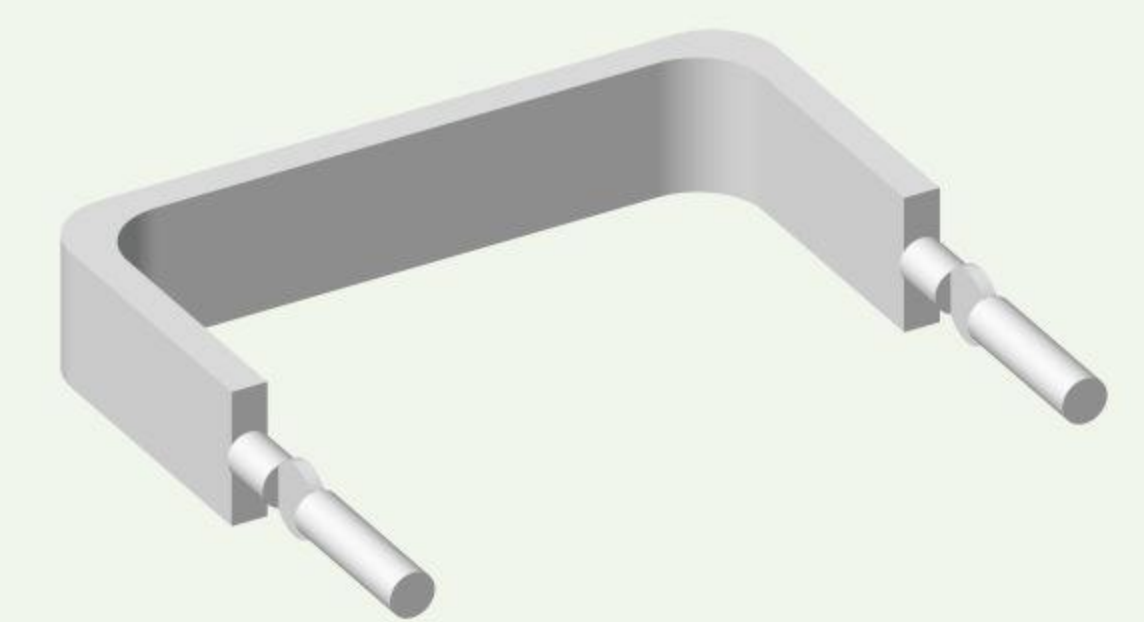
HoSR Silver Welding Resistor Door Shape

Through Hole Resistor Series

Operating Temperature: -55°C ~ +170°C

TCR(ppm/°C): ±25,±50,±75,±100

In-house Developed and Customizable



Power	Pin Space	Resistance	Tolerance
2W~5W	5mm~50mm	1mR~100mR	±0.1% ±0.2% ±0.5% ±1% ±2%

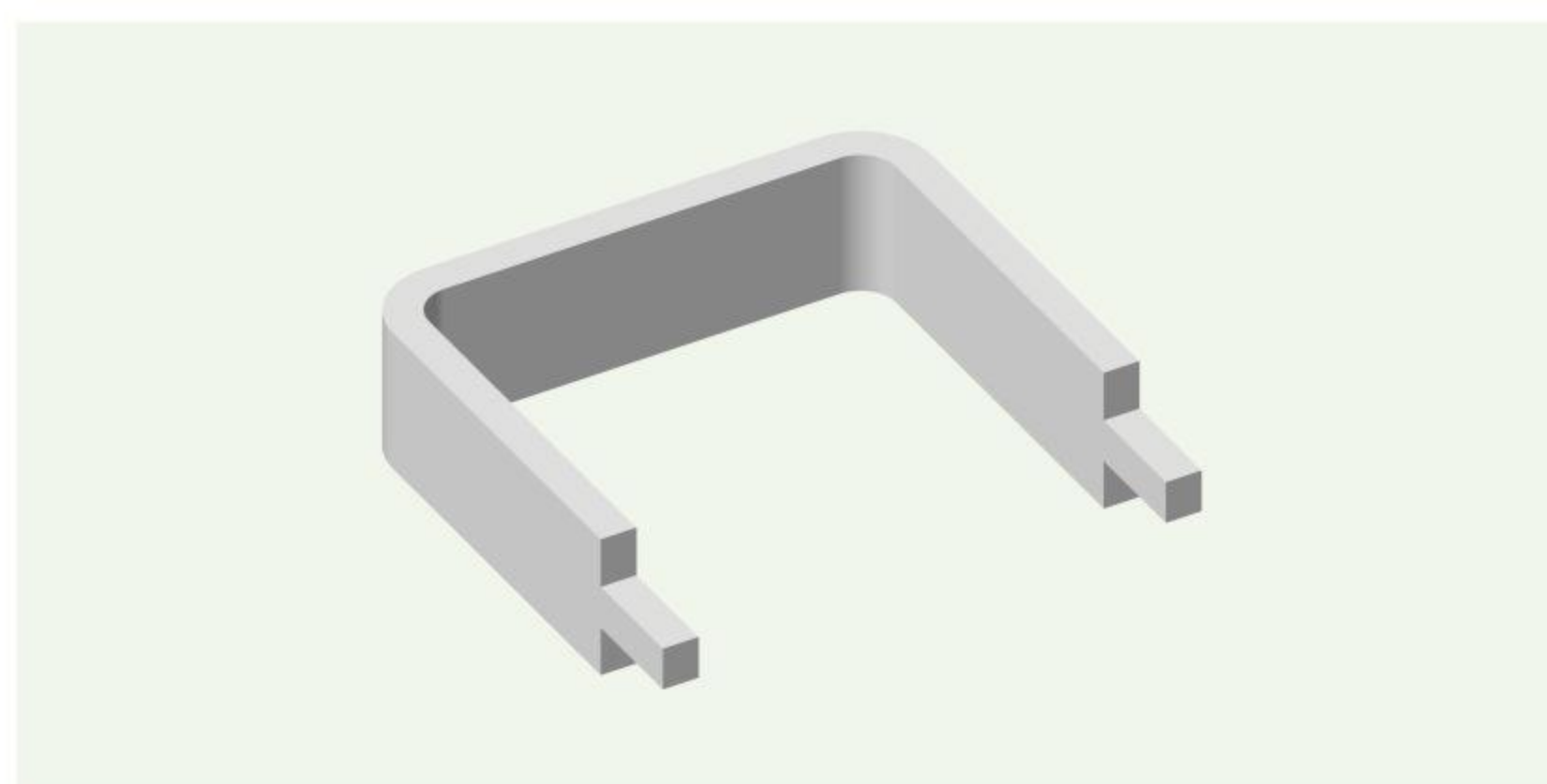
HoCY Stamped Type

Through Hole Resistor Series

Operating Temperature: $-55^{\circ}\text{C} \sim +170^{\circ}\text{C}$
TCR(ppm/ $^{\circ}\text{C}$): $\pm 25, \pm 50, \pm 75, \pm 100$

In-house Developed and Customizable

Power	Pin Space	Resistance	Tolerance
2W~5W	5mm~20mm	3mR~50mR	$\pm 0.5\%$ $\pm 1\%$ $\pm 5\%$



HIGH PRECISION RESISTOR

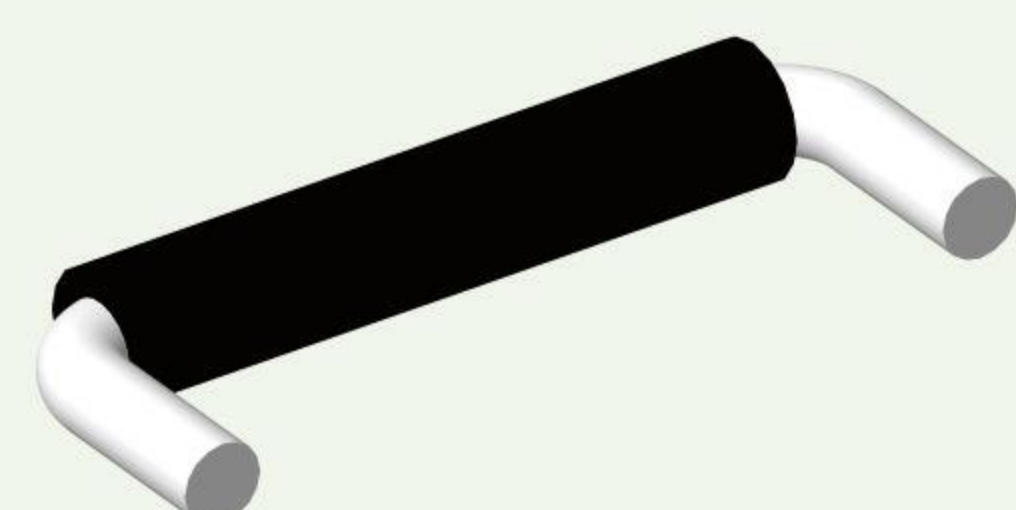
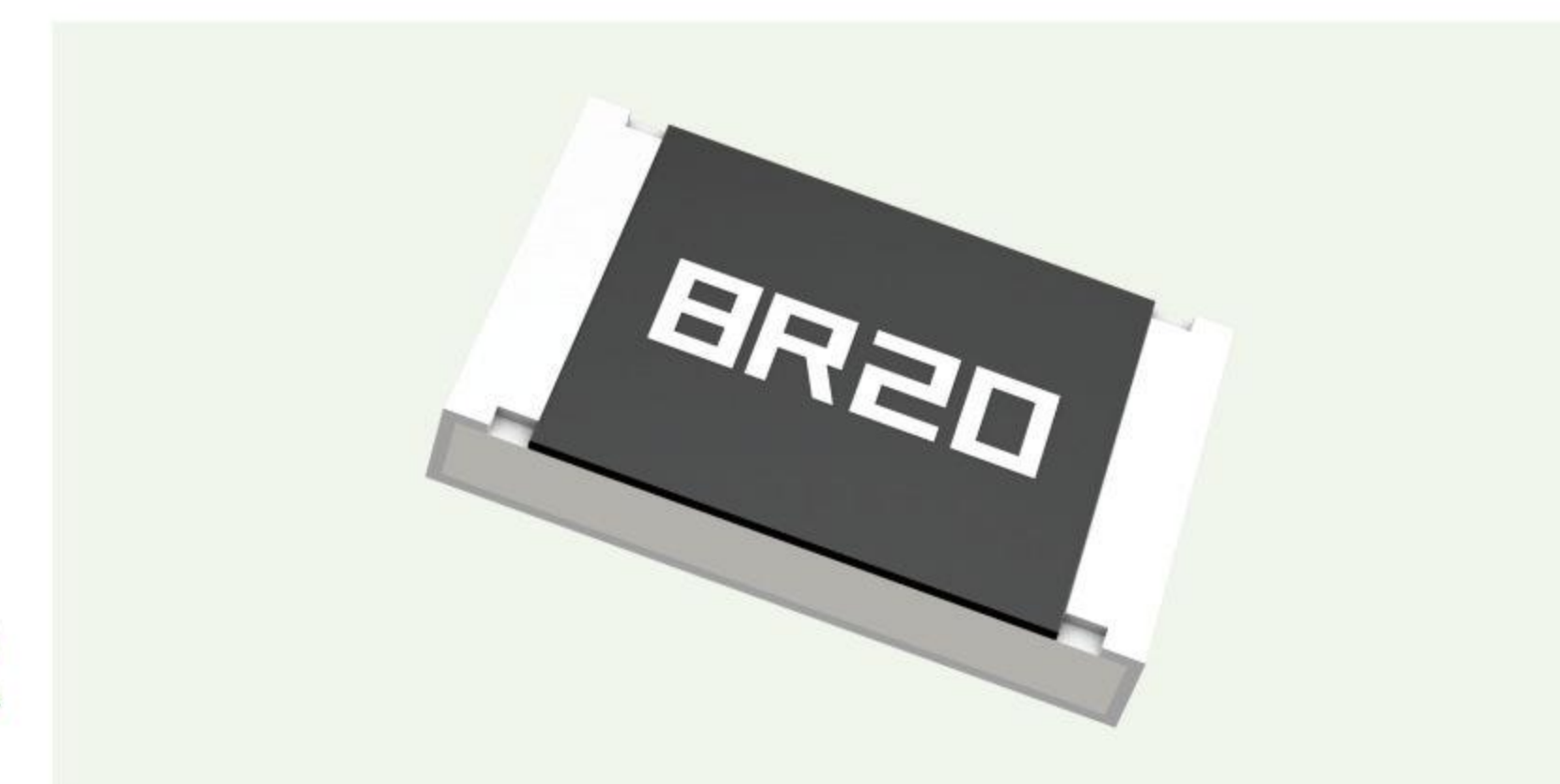
AR

High Precision Resistor Series

Operating Temperature: $-55^{\circ}\text{C} \sim +155^{\circ}\text{C}$
TCR(ppm/ $^{\circ}\text{C}$): $\pm 1, \pm 2, \pm 3, \pm 5, \pm 10, \pm 25, \pm 50$

In-house Developed and Customizable

Size	Power	Resistance	Tolerance
0201	1/32W, 1/20W	5KR ~ 49.9KR	$\pm 0.01\%$ $\pm 0.05\%$ $\pm 0.1\%$ $\pm 0.25\%$ $\pm 0.5\%$ $\pm 1\%$
0402	1/16W, 1/10W	4.7KR ~ 555KR	
0603	1/16W, 1/10W, 1/6W	1R ~ 1MR	
0805	1/10W, 1/8W, 1/4W	1R ~ 1MR	
1206	1/8W, 1/4W, 1/3W	1R ~ 1MR	
1210	1/4W, 1/3W	1R ~ 1MR	
2010	1/4W, 1/3W	1R ~ 1MR	
2512	1/2W, 3/4W, 1W	1R ~ 1MR	



T Jumper With Non-pressed Pin

Through Hole Resistor Series

Operating Temperature: $-55^{\circ}\text{C} \sim +170^{\circ}\text{C}$

In-house Developed and Customizable

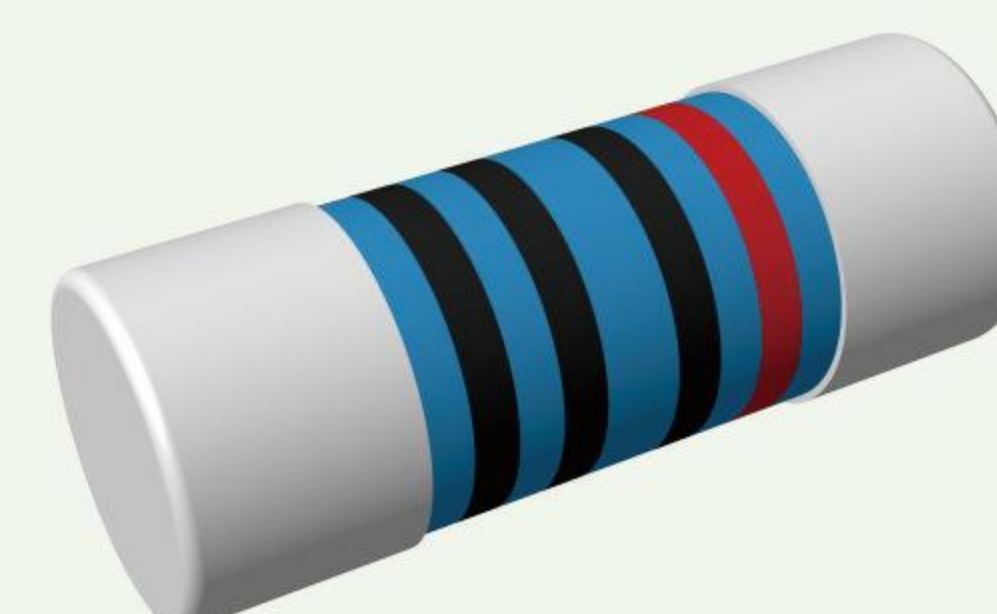
Wire Diameter	Pin Space	Insulation Tube	Resistance
0.5mm~3mm	5mm~100mm	Heat shrink tubing White insulating sleeve	<1mR

Metal Film MELF Resistor

High Precision Resistor Series

Operating Temperature: $-55^{\circ}\text{C} \sim +170^{\circ}\text{C}$
TCR(ppm/ $^{\circ}\text{C}$): $\pm 10, \pm 15, \pm 25, \pm 50, \pm 100$

In-house Developed and Customizable



Size	Resistance	Tolerance
0102	0.1R~10MR	$\pm 0.1\%$
0204		$\pm 0.25\%$
0207		$\pm 0.5\%$
0309		$\pm 1\%$ $\pm 5\%$

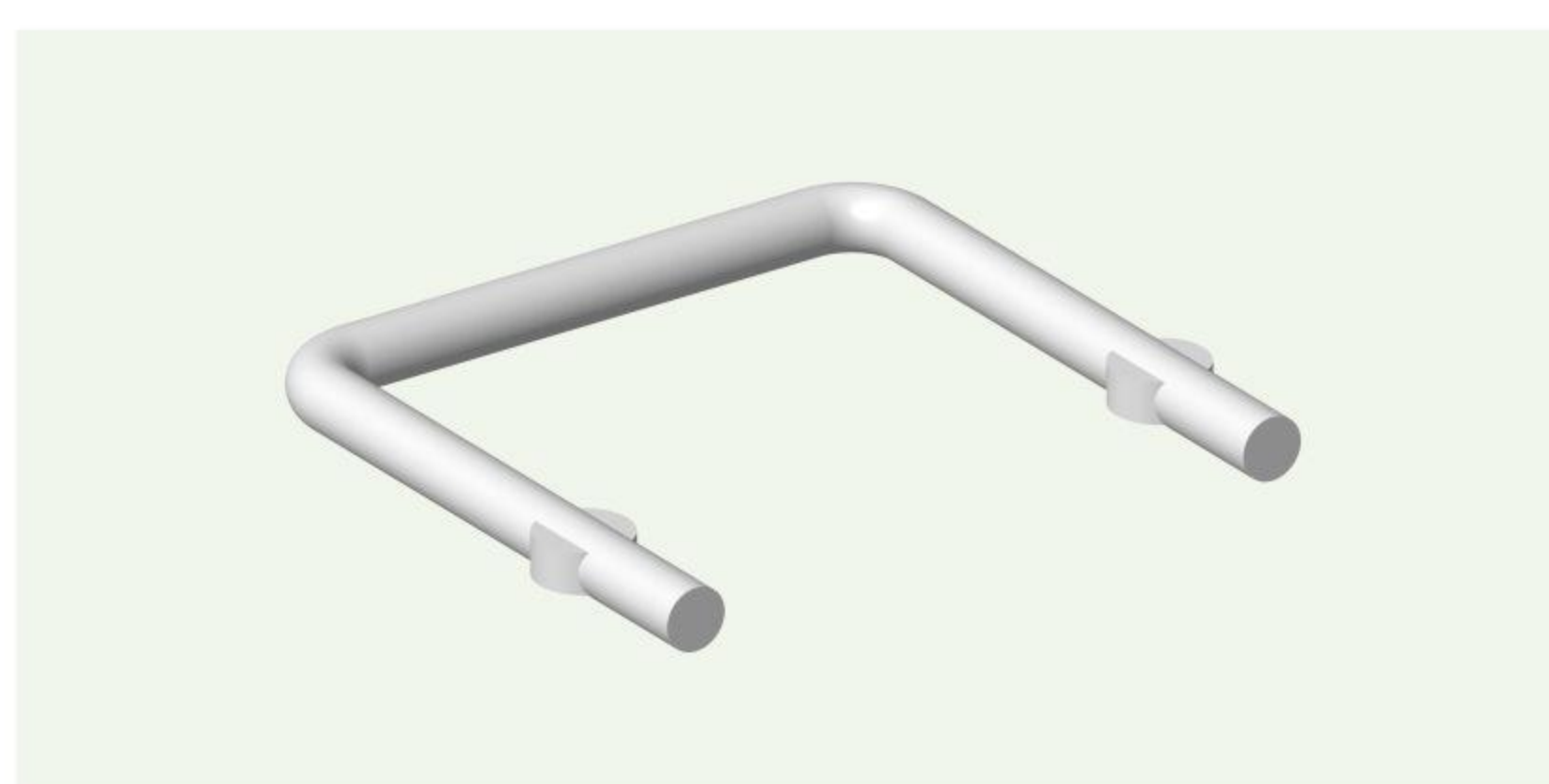
Current Sense Resistor with Pressed Pin

Through Hole Resistor Series

Operating Temperature: $-55^{\circ}\text{C} \sim +170^{\circ}\text{C}$
TCR(ppm/ $^{\circ}\text{C}$): $\pm 20, \pm 40, \pm 75, \pm 100, \pm 150$

In-house Developed and Customizable

Wire Diameter	Pin Space	Resistance	Style	Tolerance
0.5mm~4mm	5mm~100mm	0.5mR~500mR	U/UZ/HX/V /M/2M/3M/ 4M	$\pm 3\%$ $\pm 5\%$



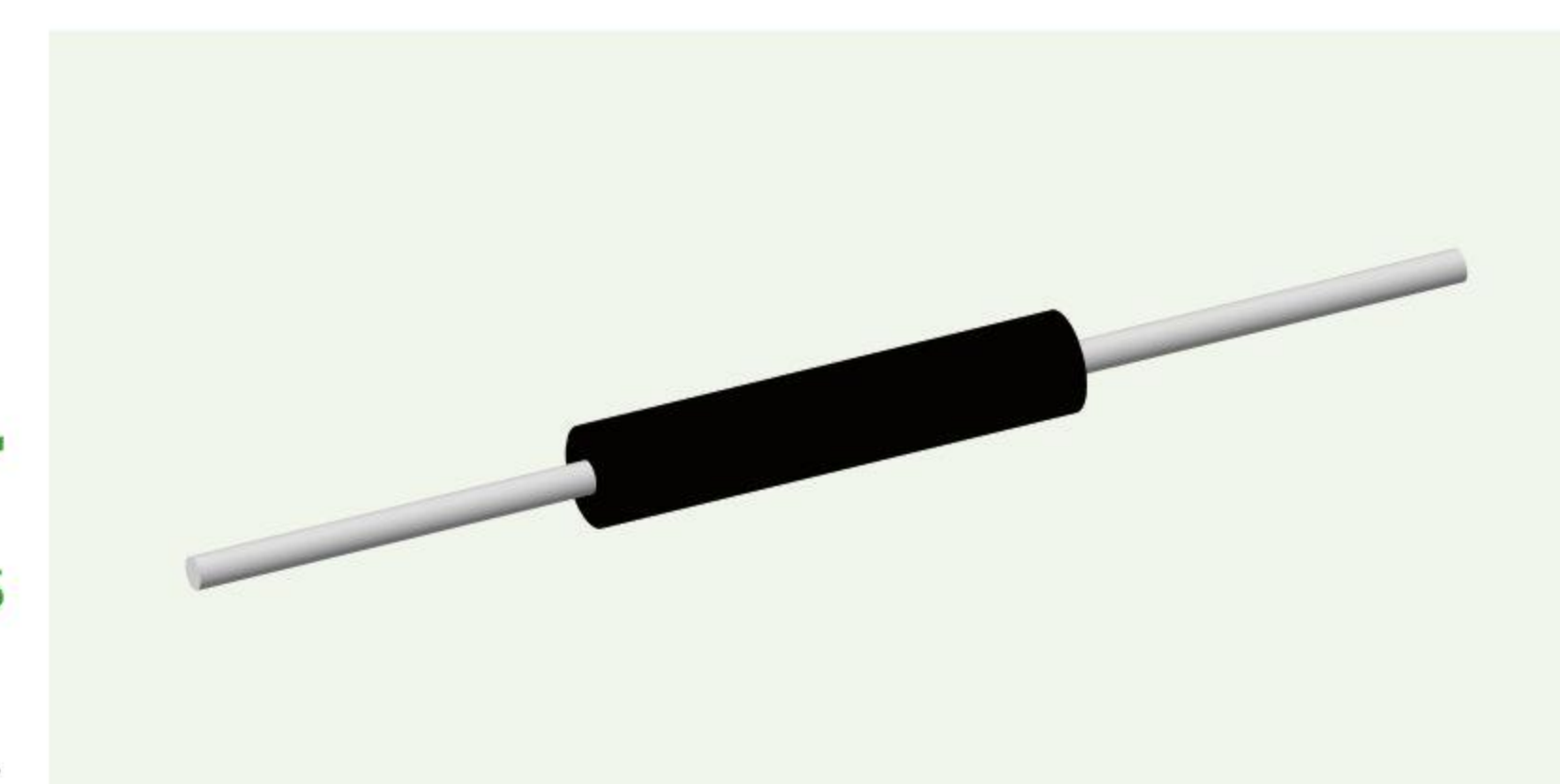
MY Molded Resistor

High Precision Resistor Series

Operating Temperature: $-55^{\circ}\text{C} \sim +170^{\circ}\text{C}$
TCR(ppm/ $^{\circ}\text{C}$): $\pm 5, \pm 10, \pm 15, \pm 25, \pm 50$

In-house Developed and Customizable

Power	Resistance	Tolerance
0.5W, 1W, 3W, 4W, 5W, 7W, 10W	2mR~39KR	$\pm 0.1\%$ $\pm 0.25\%$ $\pm 0.5\%$ $\pm 1\%$ $\pm 5\%$



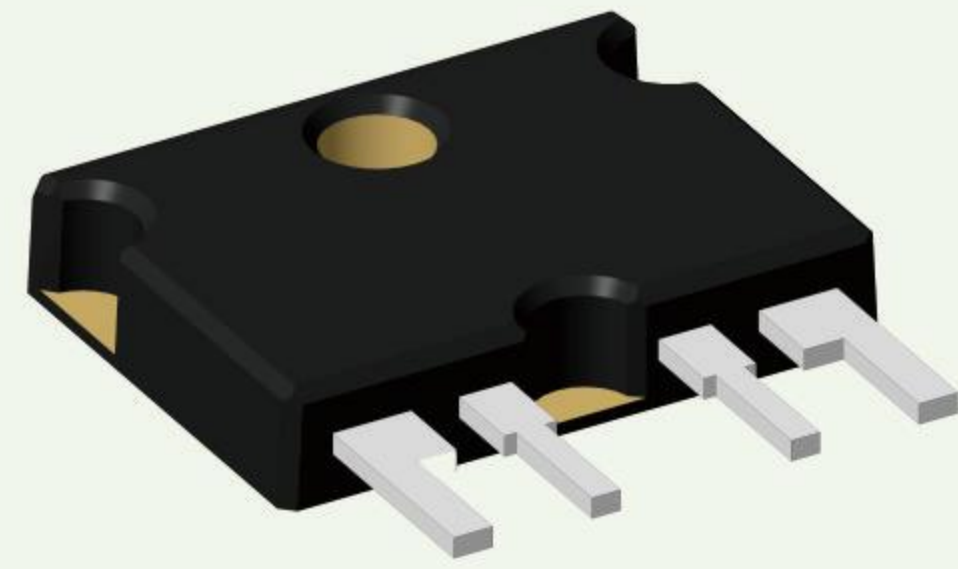
To-2321

Molded Resistor

Operating Temperature: -55°C ~ +170°C
TCR(ppm/°C): ±25

Heatsink is required at power ratings above 5W

In-house Developed and Customizable



Size	Power	Resistance	Tolerance	Features
To-2321	3W-10W	0.5mR~2R	±0.1% ±0.25% ±0.5% ±1% ±5%	low thermal EMF Low inductance

To-263

High Power Resistor Series

Operating Temperature: -55°C ~ +170°C
TCR(ppm/°C): ±50,±100,±200,±300

In-house Developed and Customizable



Size	Power	Resistance	Tolerance
To-263	35W	50mR ~ 100KR	±0.5%, ±1%, ±5%



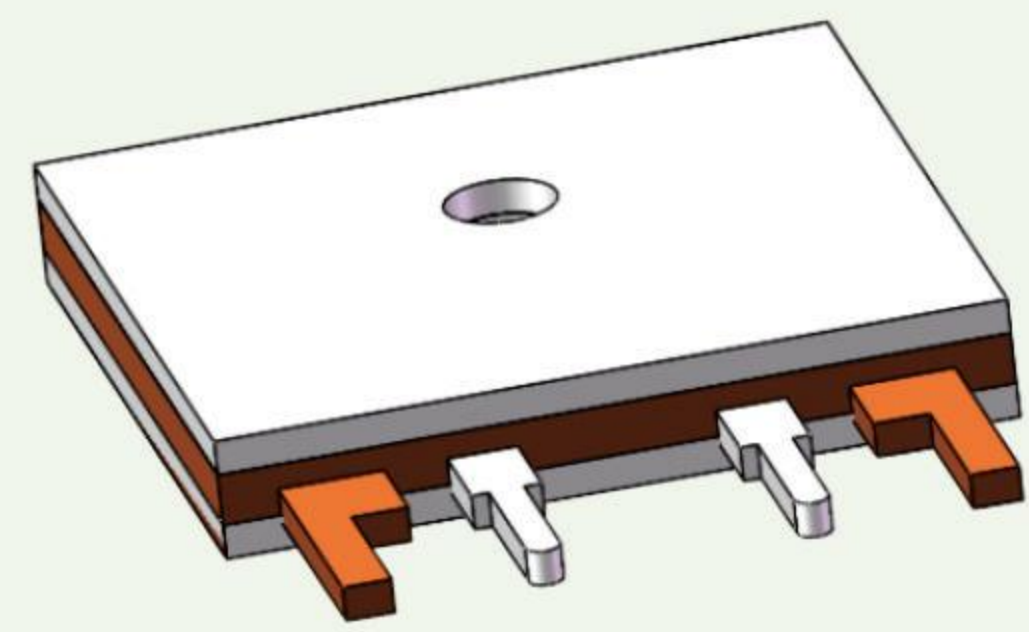
DC Resistor

DC Resistor Series

Operating Temperature: -55°C ~ +170°C
TCR(ppm/°C): ±5,±10,±15,±25,±50

Support customizable solutions
for all types of batteries

Size	Dimension	Resistance	Tolerance
10440	10*44mm	0.1mR~100mR	±0.1% ±0.5% ±1% ±5%
14500	14*50mm		
16340	16*34mm		
18650	18*65mm		
21700	21*70mm		
26650	26*65mm		



To-2321

Aluminum Encapsulation Resistor

Operating Temperature: -55°C ~ +170°C
TCR(ppm/°C): ±5,±10,±25

Heatsink is required at power ratings above 5W

In-house Developed and Customizable

Size	Power	Resistance	Tolerance	Features
To-2321	3W-10W	0.05mR~500 mR	±0.1% ±0.25% ±0.5% ±1% ±5%	low thermal EMF Low inductance

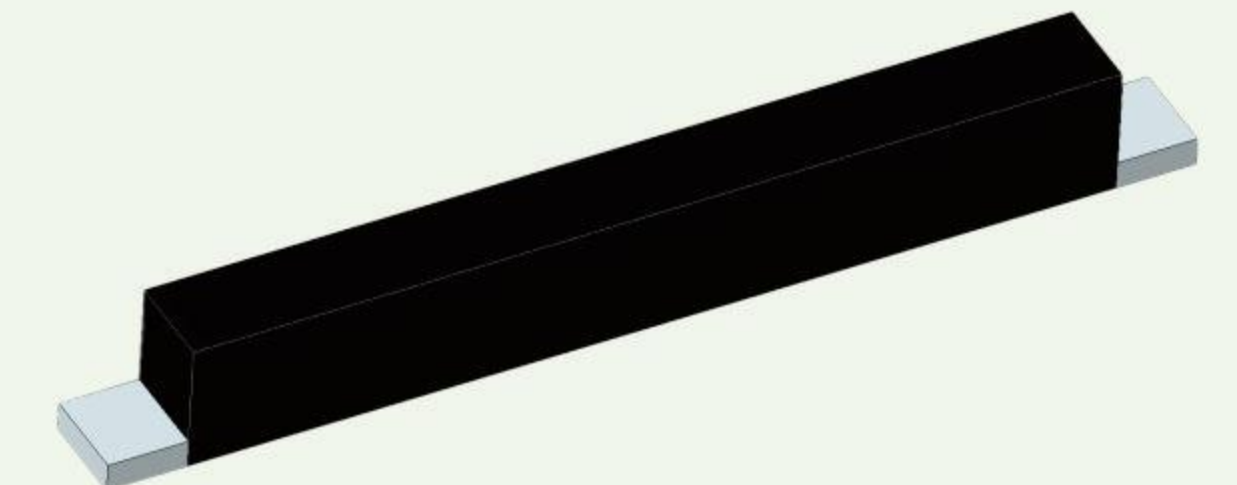
SURFACE MOUNT JUMPER RESISTOR/BUS BAR/ZERO OHM RESISTOR

HoT-D

Zero Ohm Resistor with Epoxy Encapsulation

Operating Temperature: -55°C ~ +170°C

In-house Developed and Customizable



Length	Width	Thickness	Current Load Capacity
3.2mm	1.5mm	0.6mm	5A~30A
5.2mm		0.6mm	
8.2mm		1.0mm	
10.2mm		0.8mm	
13.2mm		0.8mm	

To-220 / To-247

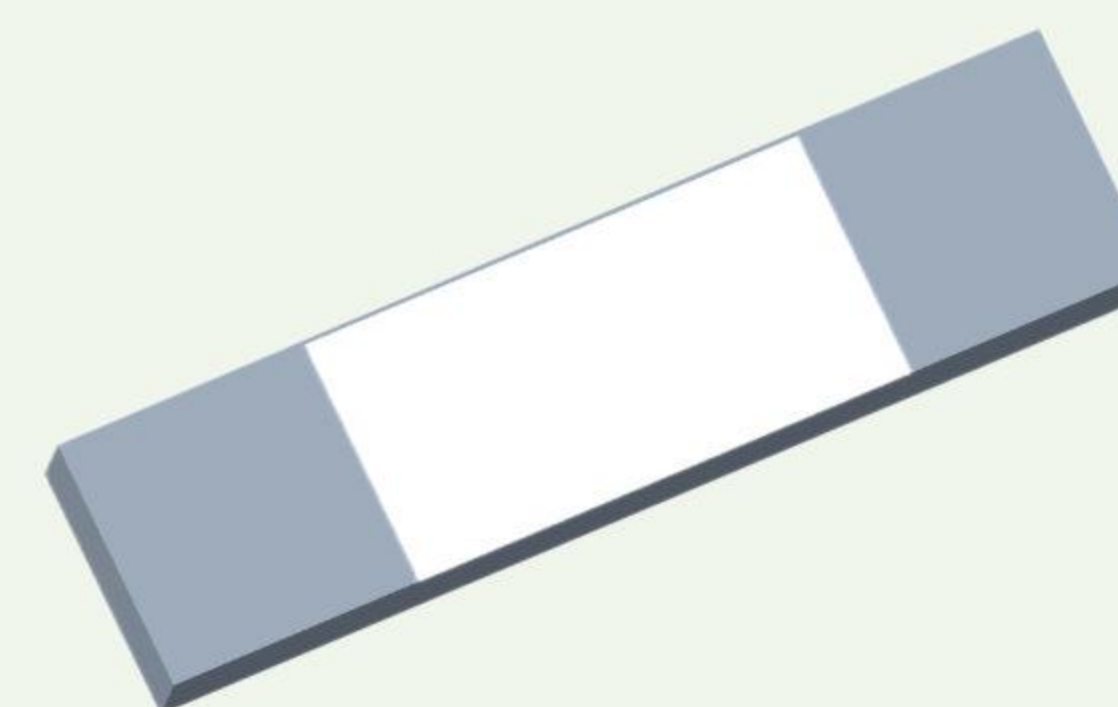
High Power Resistor Series

Operating Temperature: -55°C ~ +170°C
TCR(ppm/°C): ±50,±100,±200,±300

In-house Developed and Customizable



Size	Power	Resistance	Tolerance
To-220	20W	10mR ~ 100KR	±0.5% ±1% ±5%
	30W		
	35W		
	50W		
To-247	100W	50mR ~ 10KR	



HoT

Zero Ohm Resistor with Conformal Coating

Operating Temperature: -55°C ~ +170°C

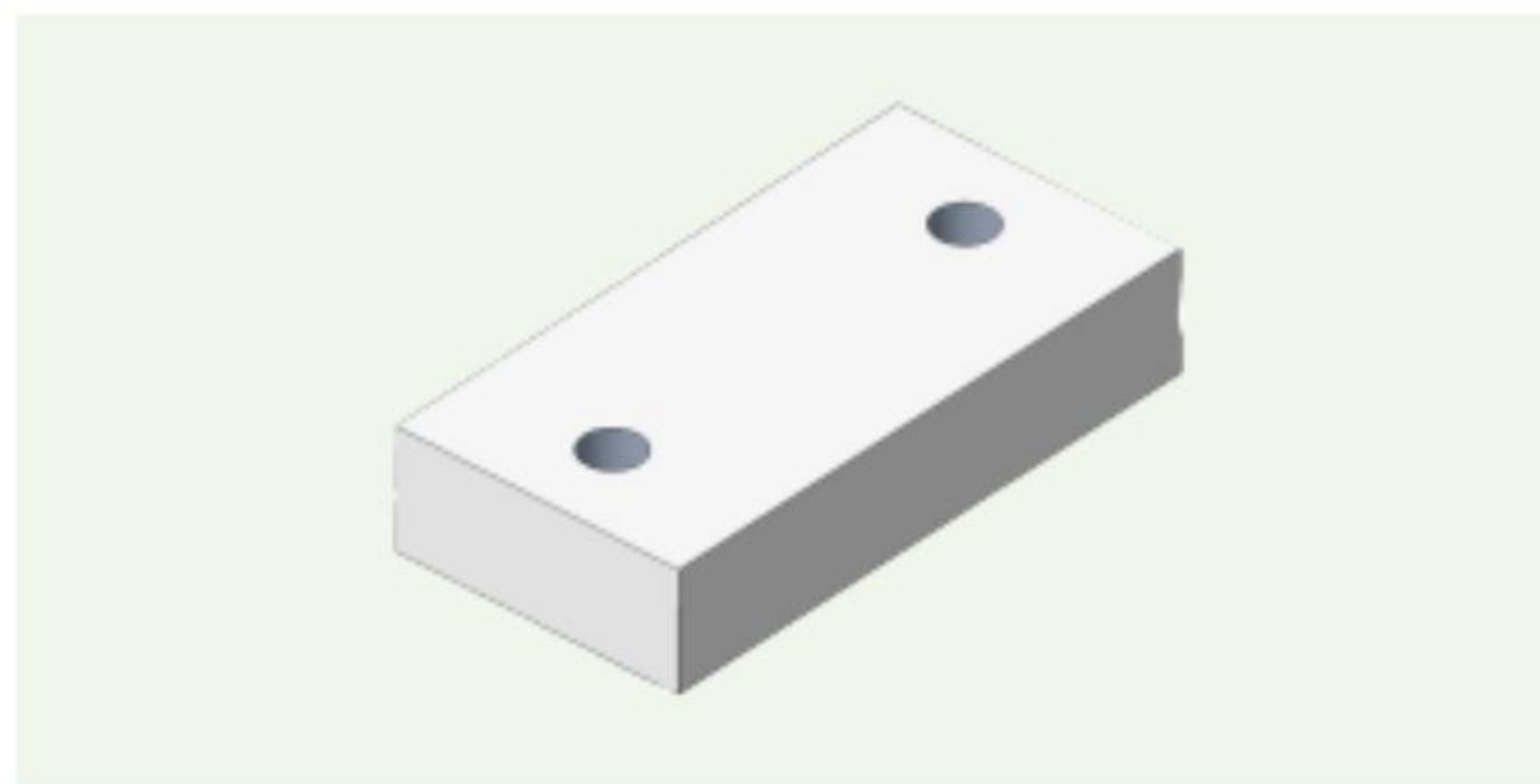
In-house Developed and Customizable

Length	Width	Thickness	Current Load Capacity
3.2mm	1.3~1.5mm	0.2~0.4mm	10A~20A
5.2mm			
8.2mm			

HoT

Surface Mount Jumper Resistor Series

Operating Temperature: -55°C ~ +170°C



In-house Developed and Customizable

Length	Width	Thickness	Current Load Capacity	Type
2~11mm	1.3~4.5mm	0.3~5.0mm	10A~100A	without hole with hole



HoT

Surface Mount Jumper Resistor Series

Operating Temperature: -55°C ~ +170°C

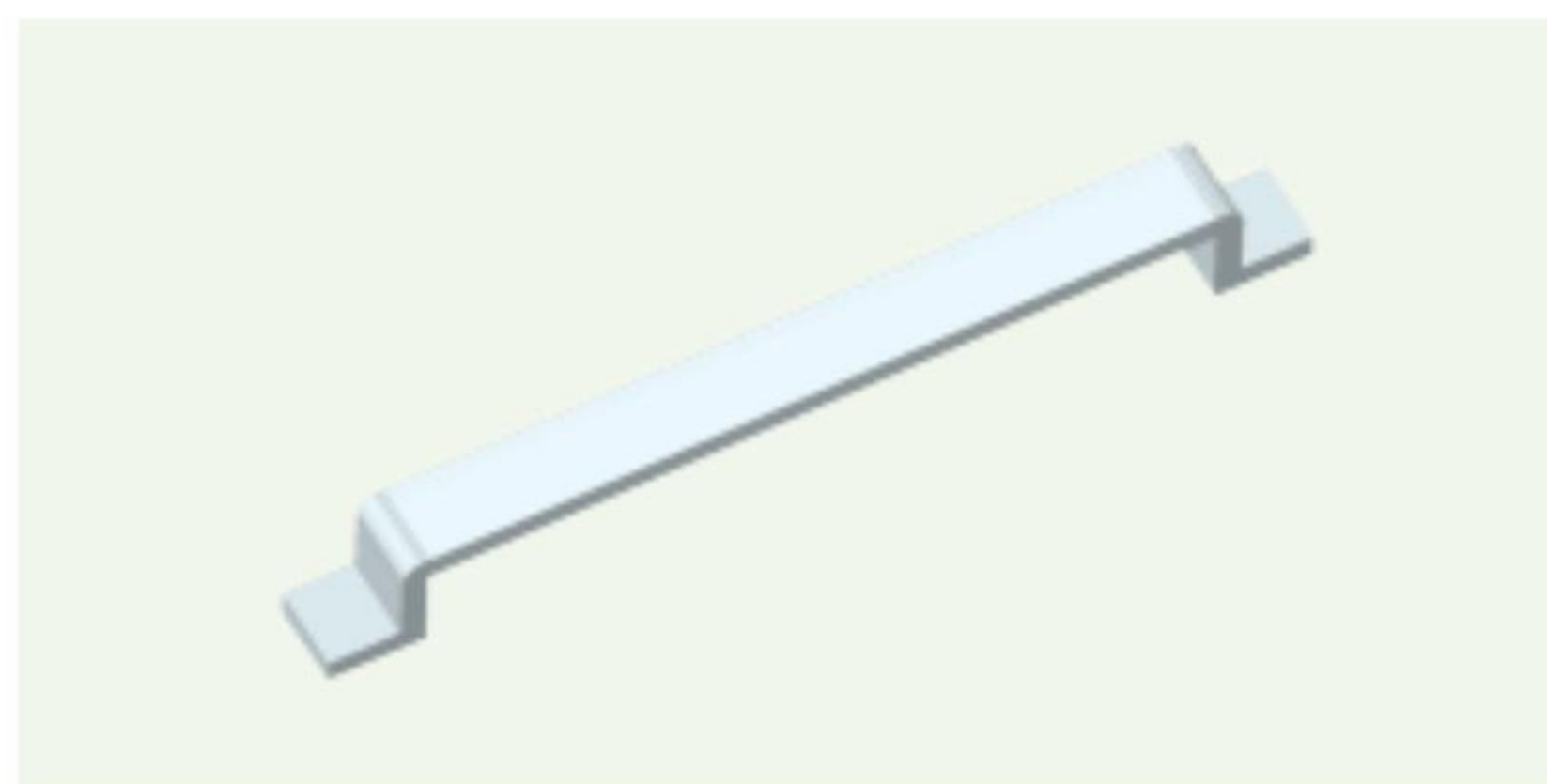
In-house Developed and Customizable

Length	Width	Thickness	Current Load Capacity
3.0~100mm	1.0~10mm	0.3~5.0mm	100A~600A

HoT-C

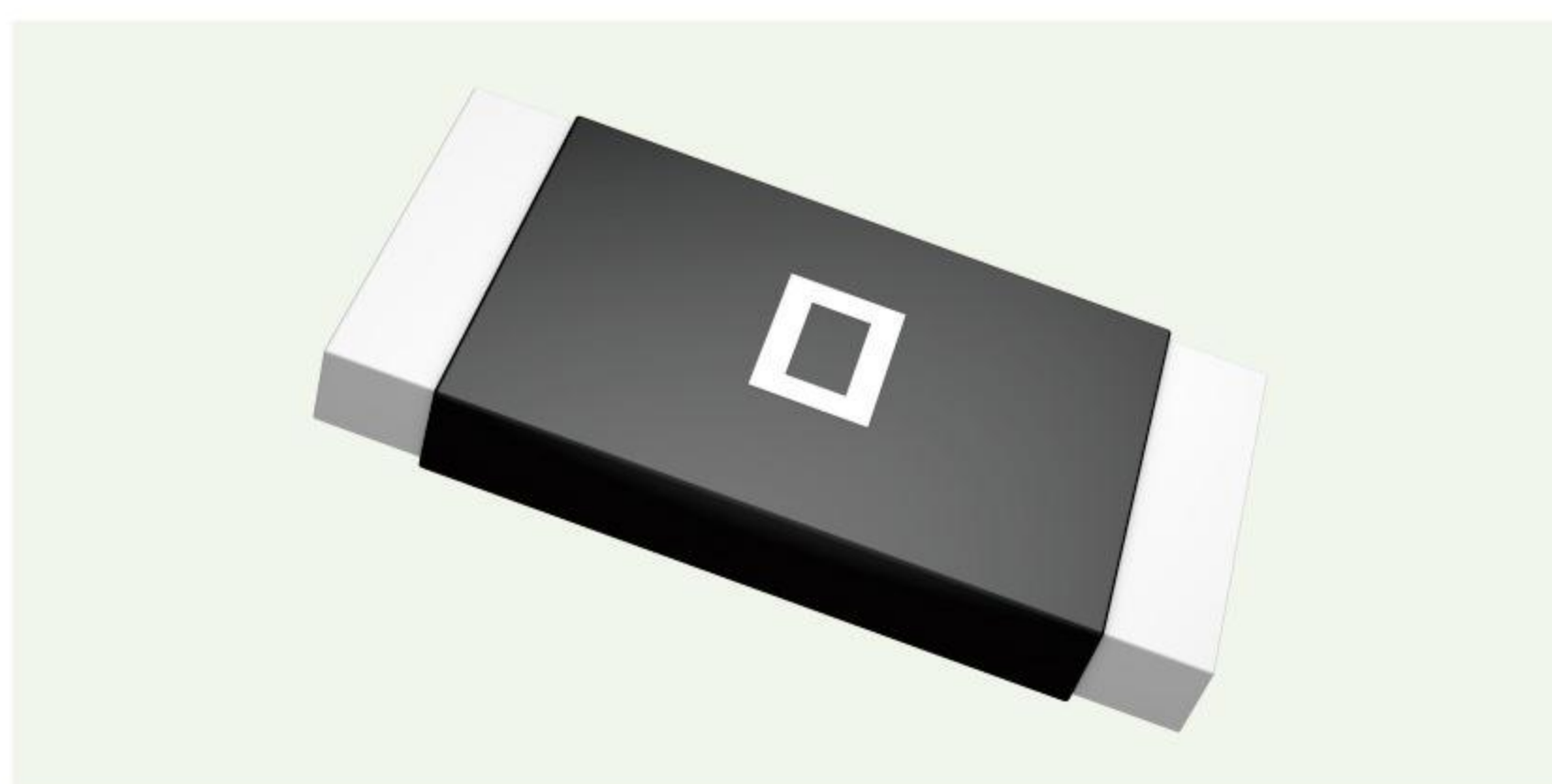
Open Air Zero Ohm Jumper

Operating Temperature: -55°C ~ +170°C



In-house Developed and Customizable

Length	Width	Thickness	Current Load Capacity
3.0~20mm	1.0~10mm	0.3~2mm	10A~100A



HoCG

Zero Ohm Resistor

Operating Temperature: -55°C ~ +170°C
TCR(ppm/°C): ±25,±50,±100,±150

In-house Developed and Customizable

Size	Power	Resistance	Material
2512	3W	0mR	Cu
2725	4W	0mR	Cu
2728	4W	0mR	Cu
2817	5W	0mR	Cu
3637	5W	0mR	Cu
4527	7W	0mR	Cu

Company Qualification and Honor: Specialized and Sophisticated Enterprise, National High-Tech Enterprise

Production Quality System Certification: IATF 16949, ISO9001

Product Certification: AEC-Q200, State Grid Certification, CE

Production: Fully Automated Production Management



Scan the QR code for more support

Corporate Headquarter

Shenzhen Milliohm Electronic Co.,Ltd

Customer Service: +86 755-8148 8408

Telephone: +86 189 2601 3721

Whatsapp: 00852-52692206

Skype: ho08@moolee.com.cn

Email: ho08@moolee.com.cn

Website: www.moolee.com.cn / www.milliohm.net

Address: RM.2001, BLDG.C, Phase III, Jinxiu Technology Park, No. 85 Hudipai, Longhua District, Shenzhen, Guangdong, China

Branches and Offices

Beijing

Tel: +86 199 2871 9850

Email: ho07@moolee.com.cn

Add: 101-064, 1/F, Building 1, No. 13 of Yongkai East Road, Tongzhou District, Beijing China

Suzhou

Tel: +86 135 8429 3305

Email: ho13@moolee.com.cn

Add: No. 7070, East Taihu Avenue, Wujiang District, Suzhou City, Jiangsu Province China

Shanghai

Tel: +86 133 1651 8276

Email: ho02@moolee.com.cn

Add: Room 415, Building 4, Baoji E Smart Valley, No. 177 Fulian 2nd Road, Baoshan District, Shanghai China

Production Sites

Shenzhen

Email: ho01@moolee.com.cn

Add: RM.2001, BLDG.C, Phase III, Jinxiu Technology Park, No. 85 Hudipai, Longhua District, Shenzhen, Guangdong Province China.

Foshan

Email: ho01@moolee.com.cn

Add: 11/F, Building 1, Zone 1, Wanyang Zhongchuang Park, Baoyong Industrial Avenue, Longjiang Town, Shunde District, Foshan City, Guangdong Province China.

Anhui

Email: ho01@moolee.com.cn

Add: Building 9, New Material Industrial Park, Xinghua Road, Qinji Town, Yuhui District, Bengbu City, Anhui Province China.